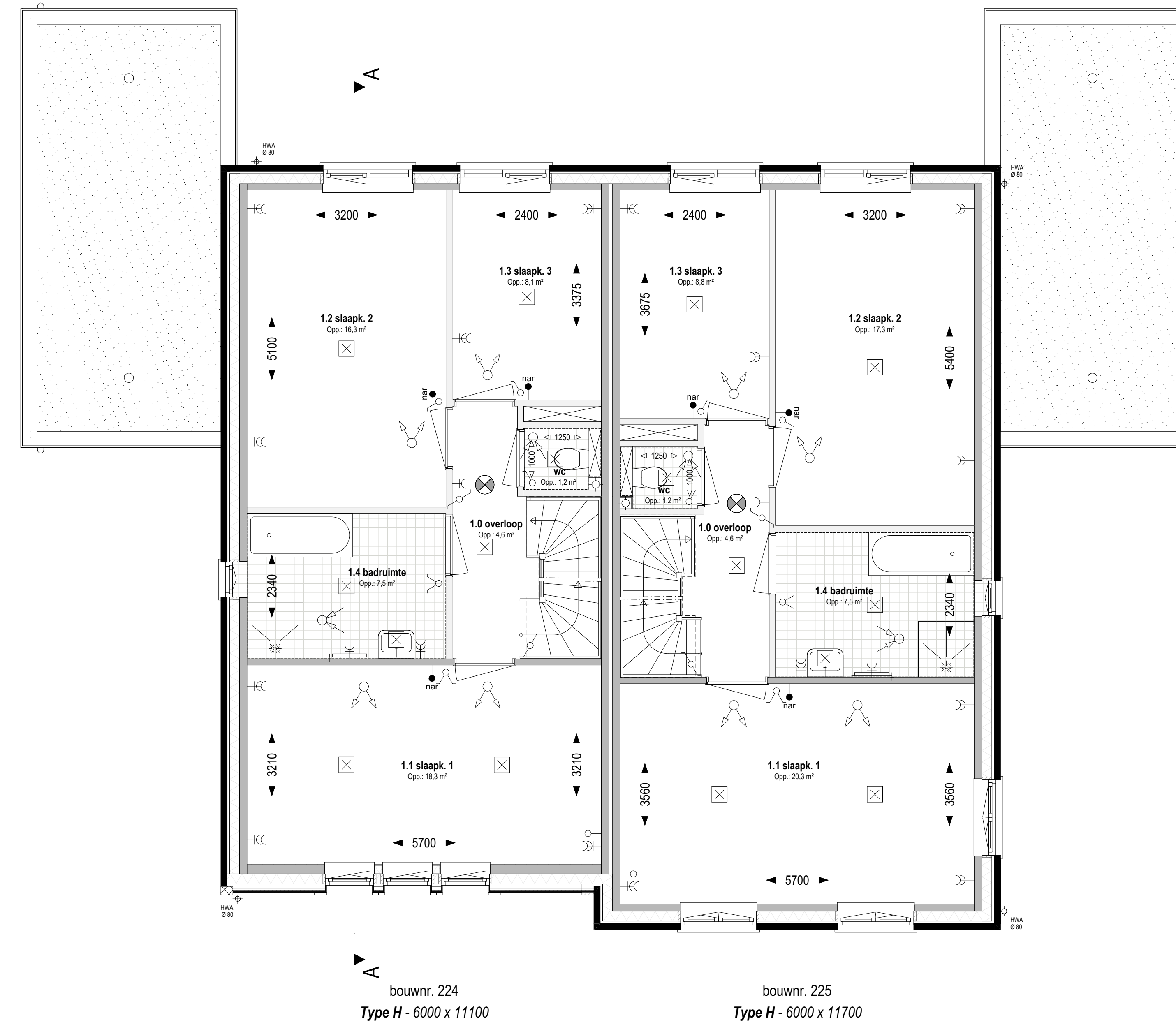
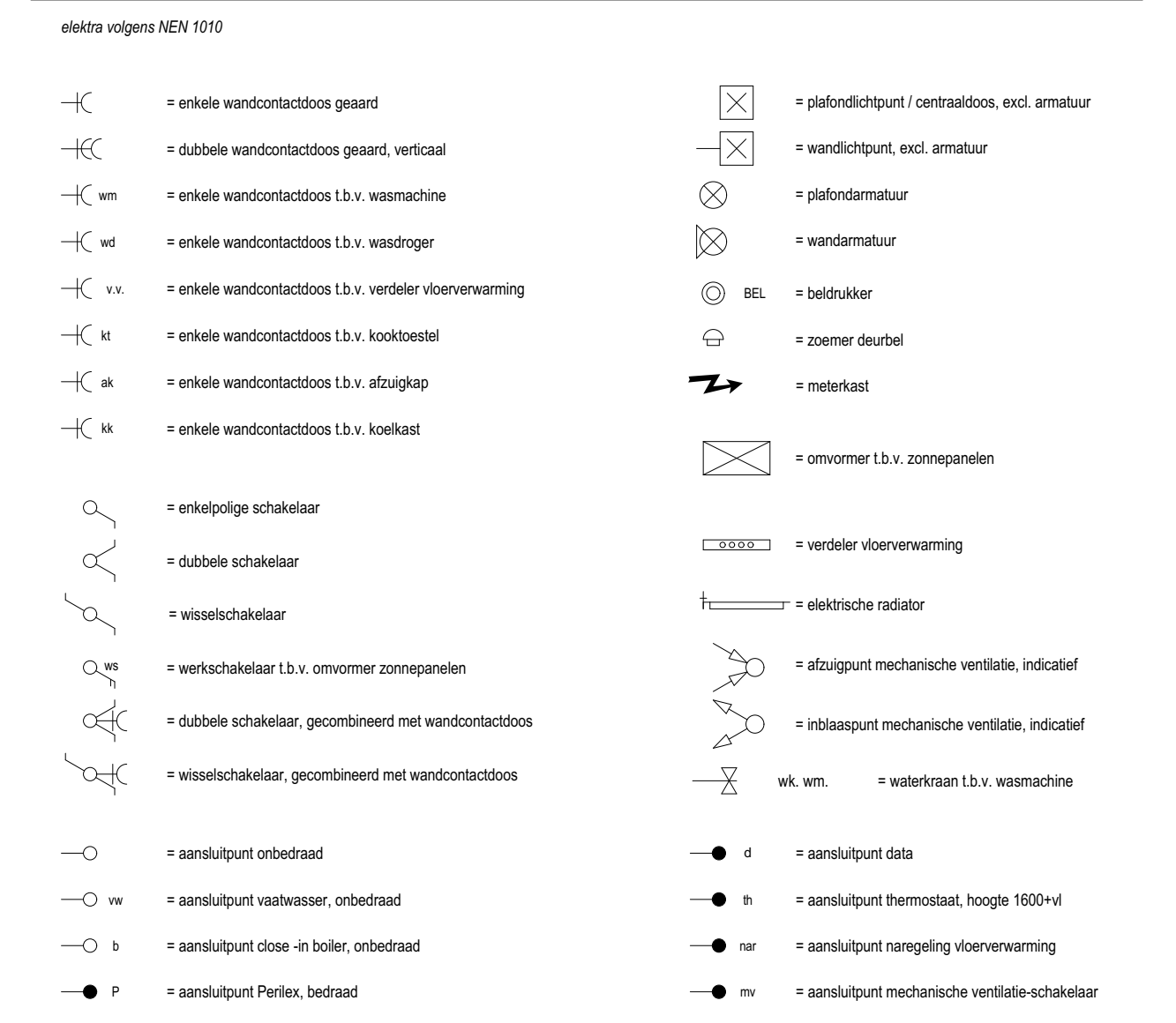


Begane grond Peil=0 (1:50)

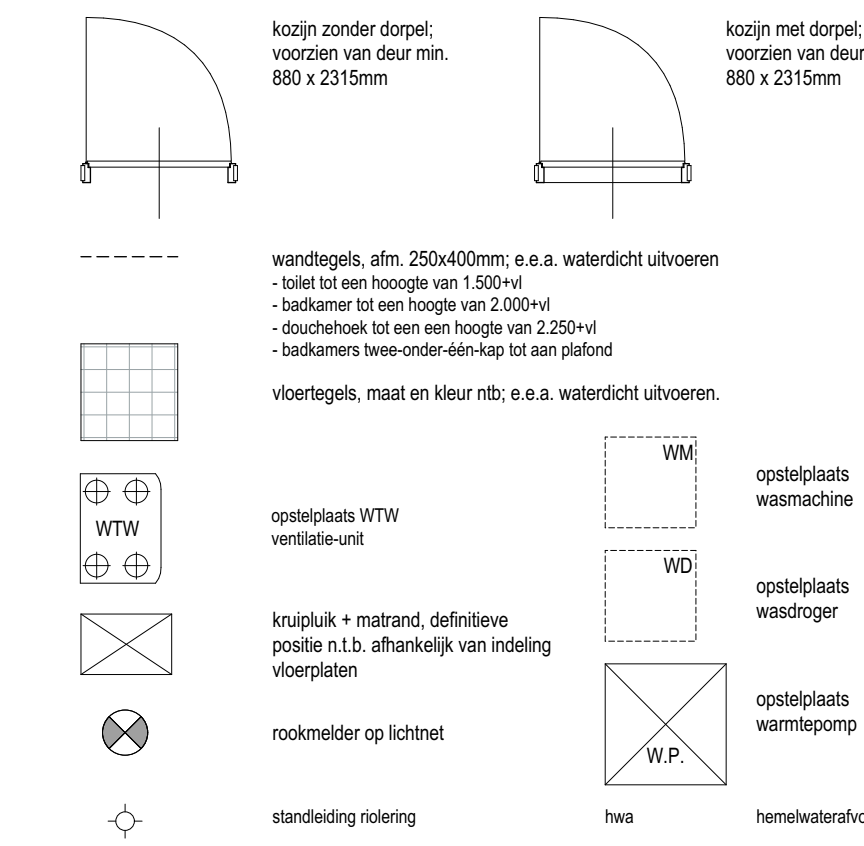


1e Verdieping +2920 (1:50)

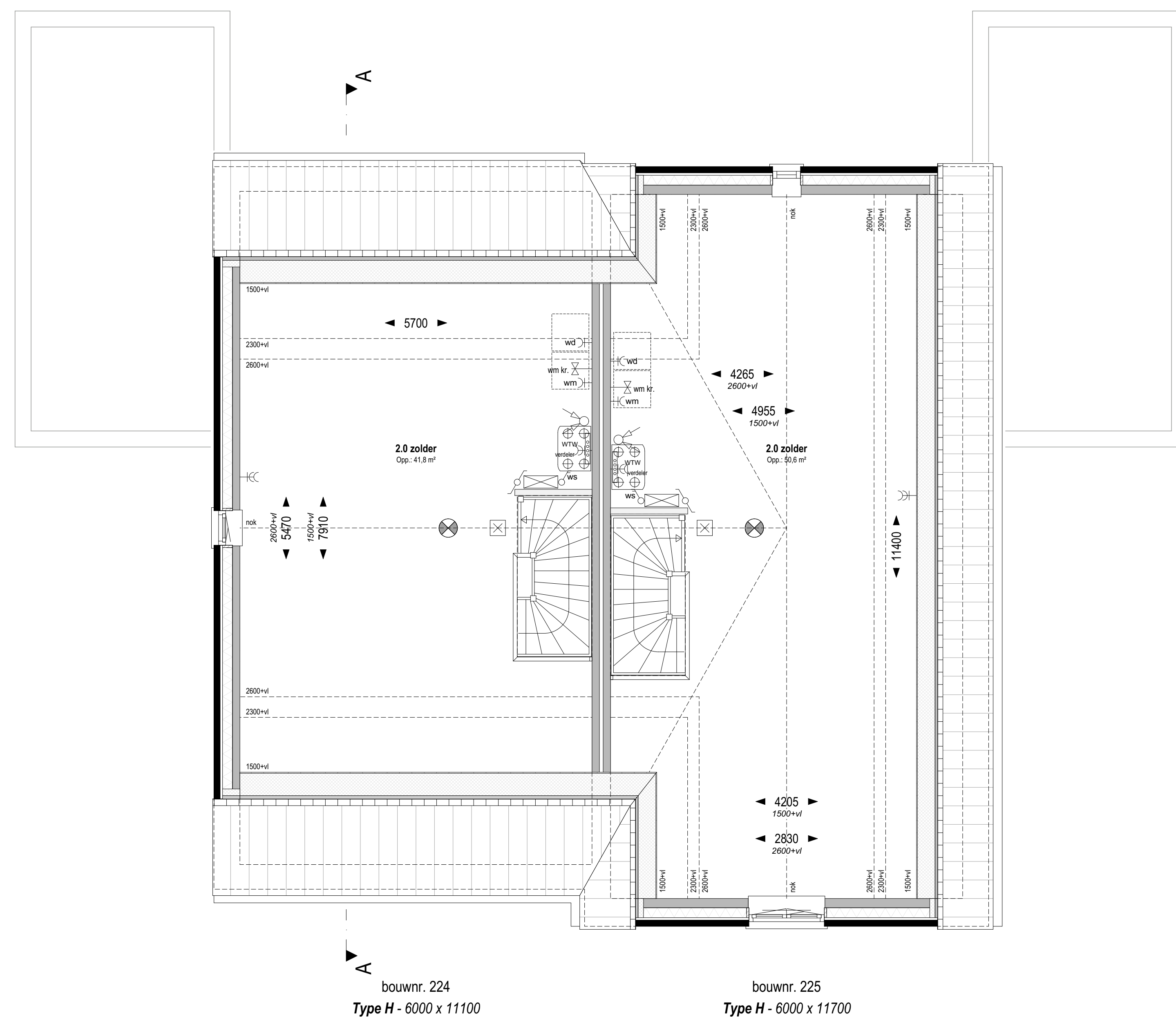
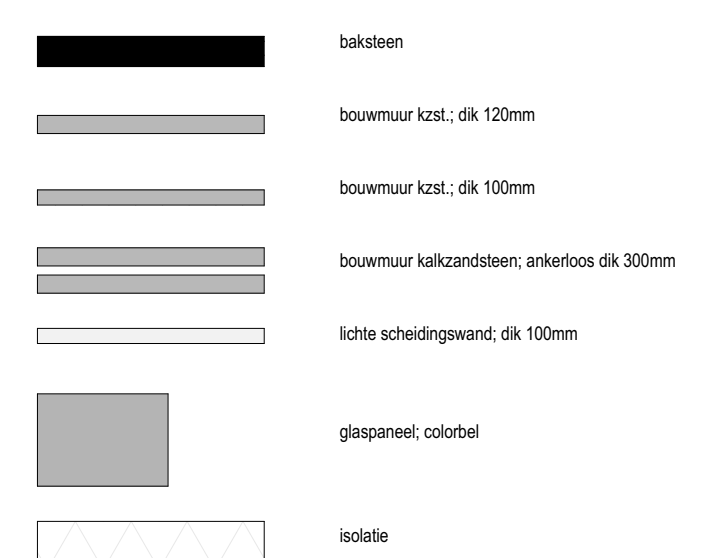
Renvoer electra, installaties



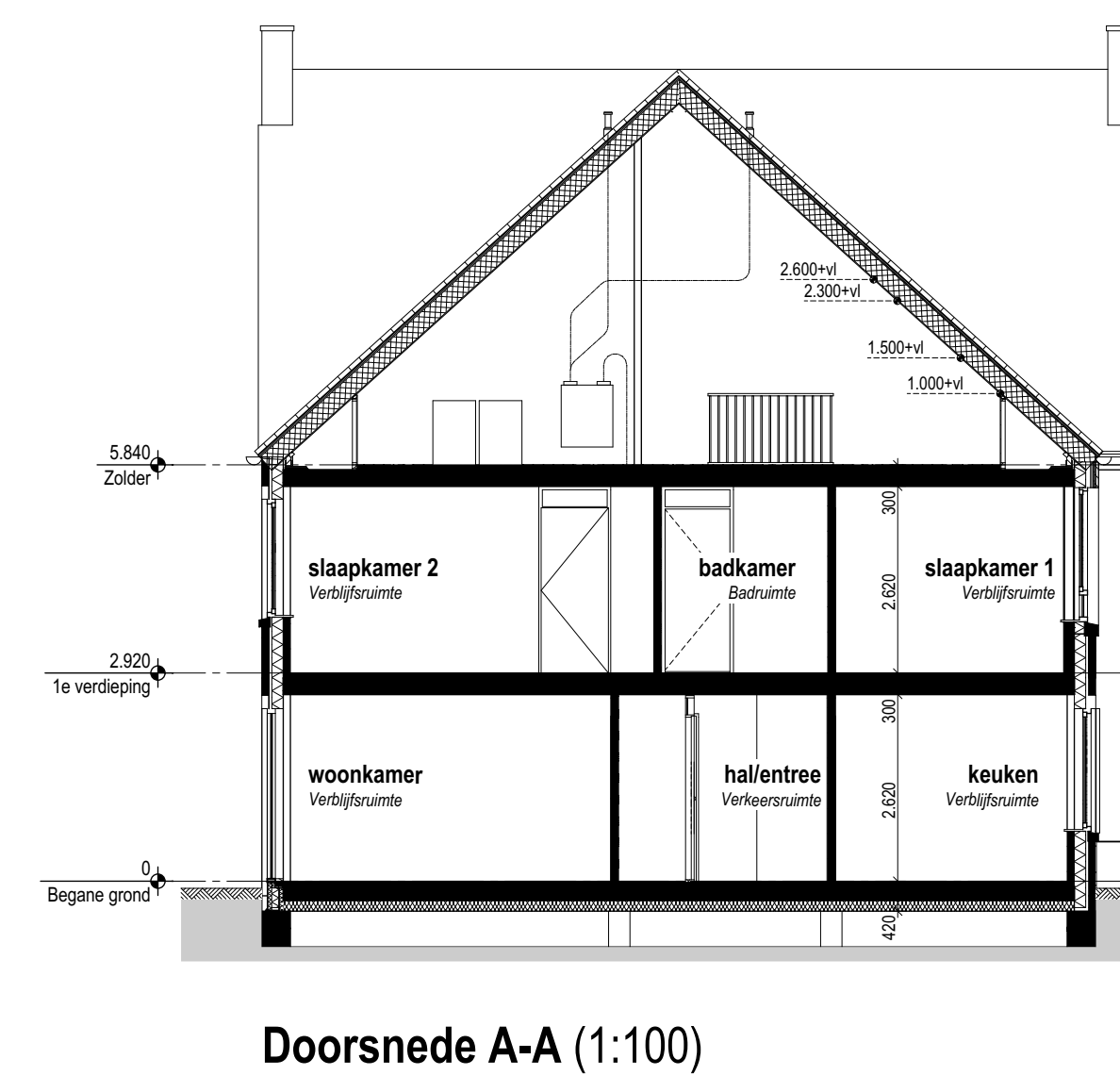
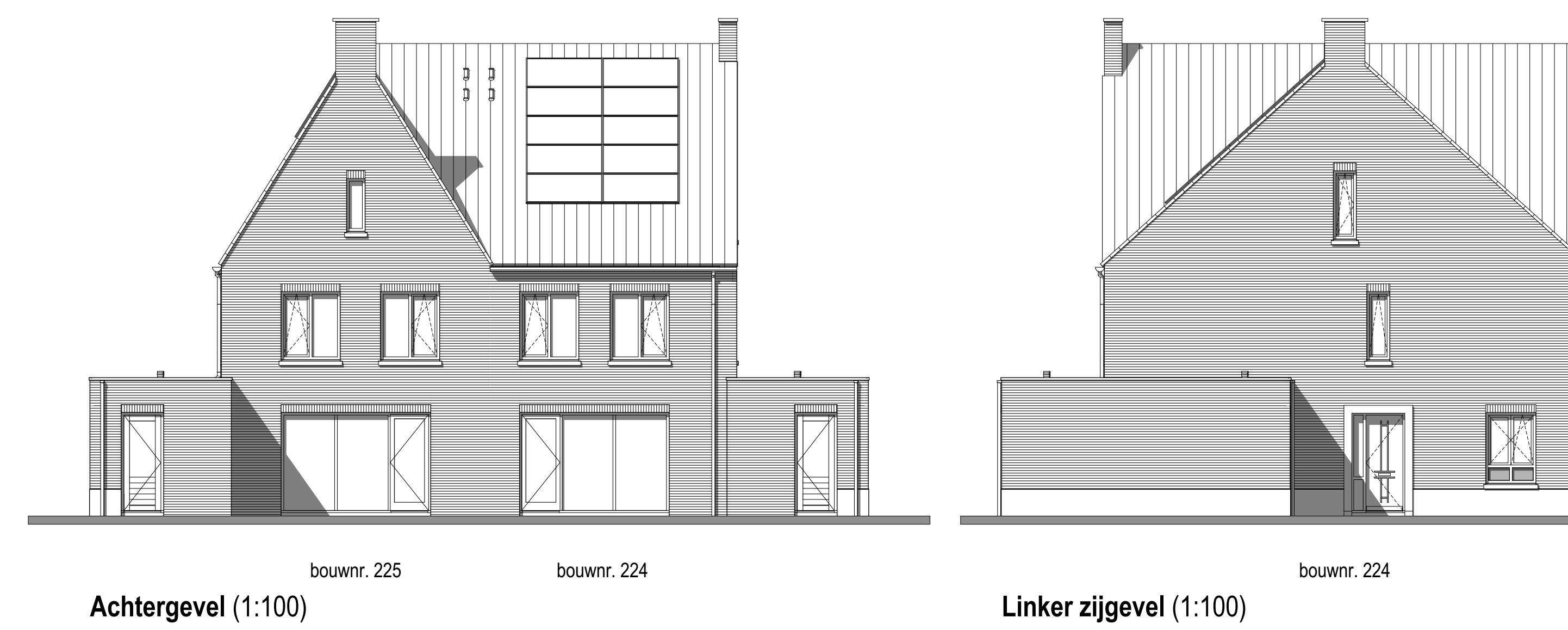
Renvoer algemeen



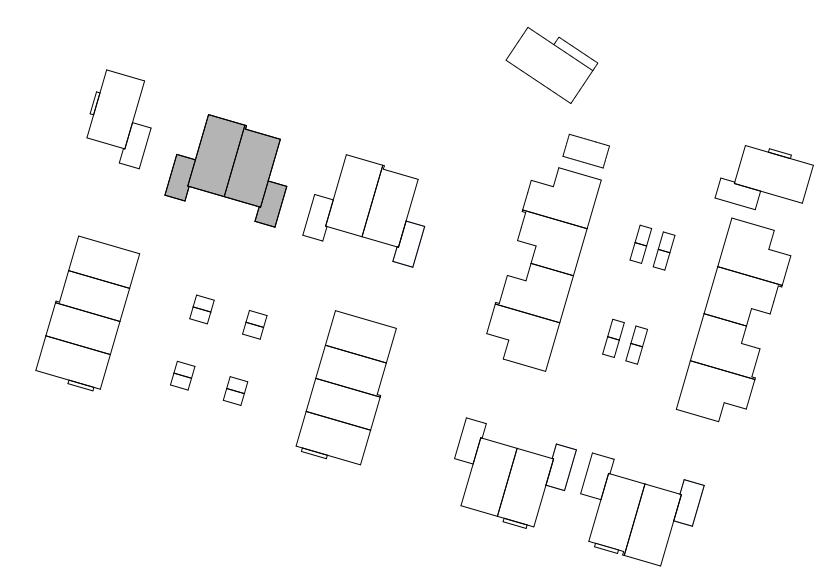
Renvoer materialen



Zolder +5840 (1:50)



Doorsnede A-A (1:100)



weusten liedenbaum architecten Project "Hoog Dalem", deelplan D2, Populier - Gorinchem Opdrachtgever V.O.F. Ooster-Linge 2		Project nummer 19-2073
Onderdeel Plattegronden gevels en drsn BLOK K - bwnr 224 en 225	Datum 13-08-2021	Status Definitief
Uitschetsweg 167 6812 AC Arnhem 026 443 6972 info@weustenliedenbaum.nl www.weustenliedenbaum.nl	Wijkpoging A Wijkpoging B Wijkpoging D Wijkpoging F	Wijkpoging C Wijkpoging E Wijkpoging G
Tekening nummer VK - 115		Schaal 1:50, 1:100