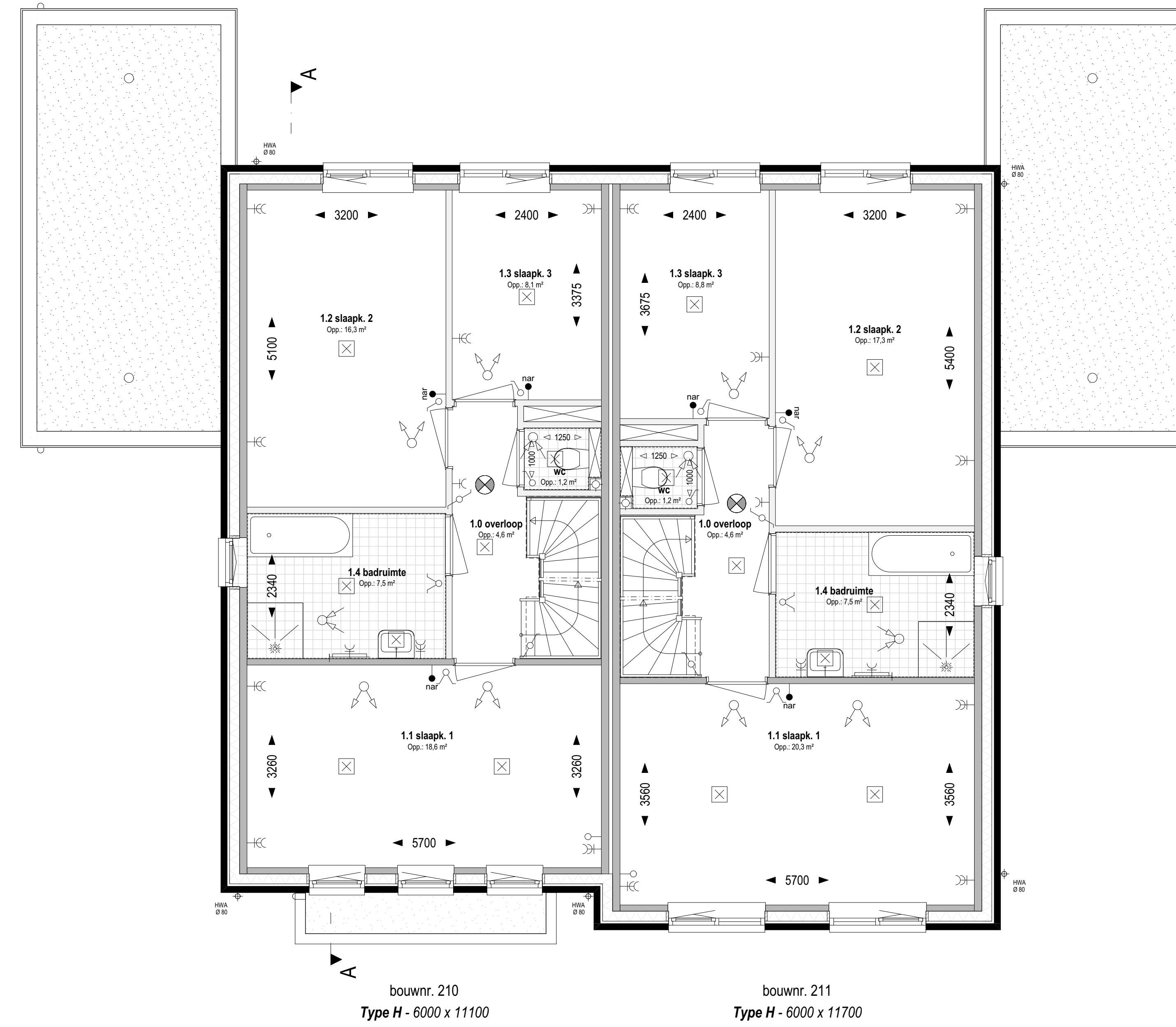
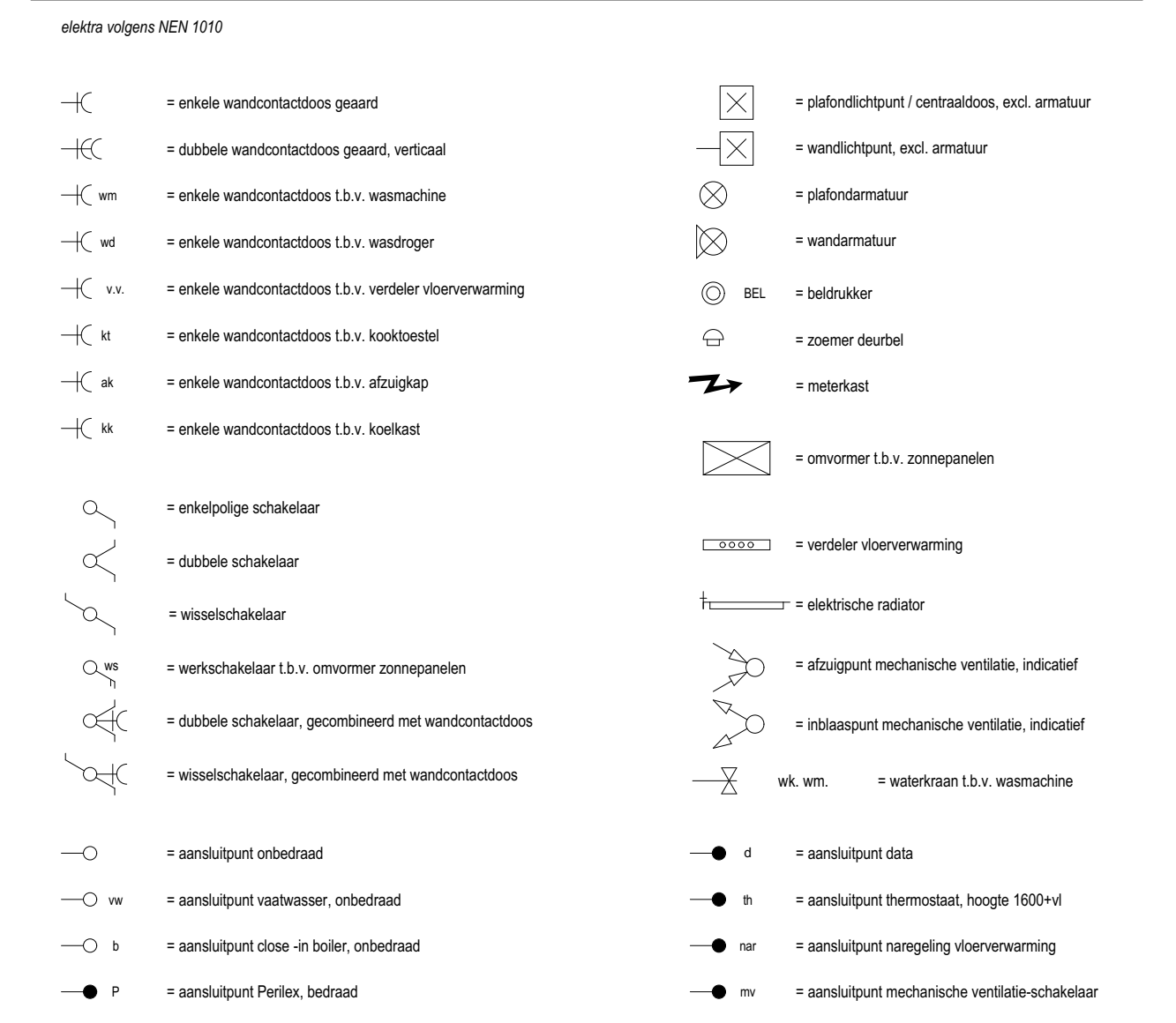


Begane grond Peil=0 (1:50)

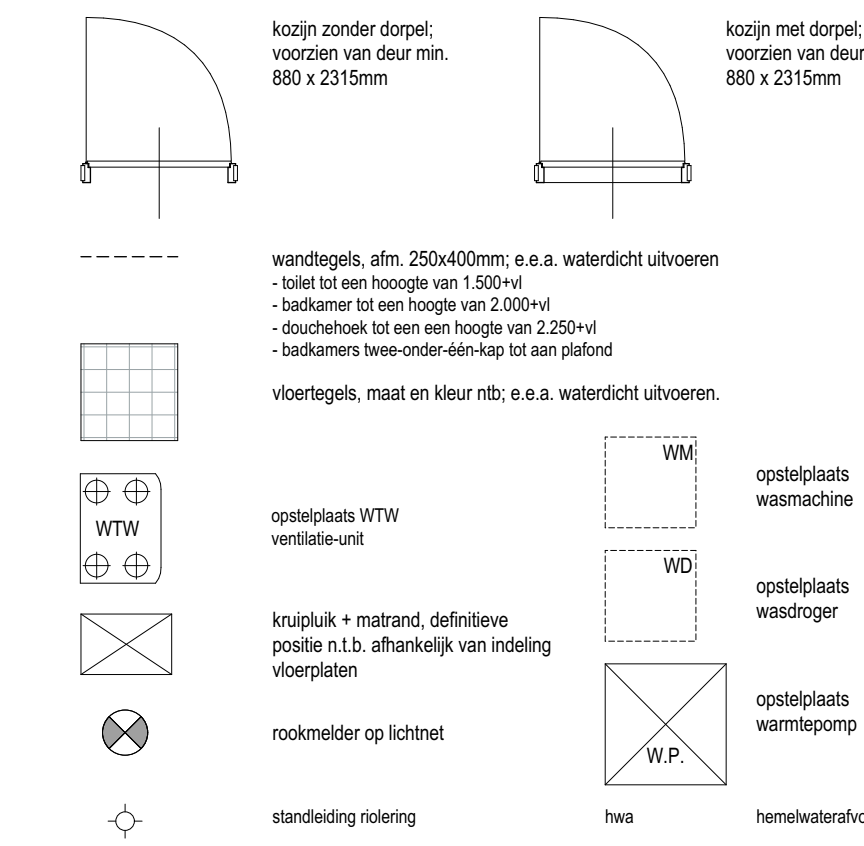


1e Verdieping +2920 (1:50)

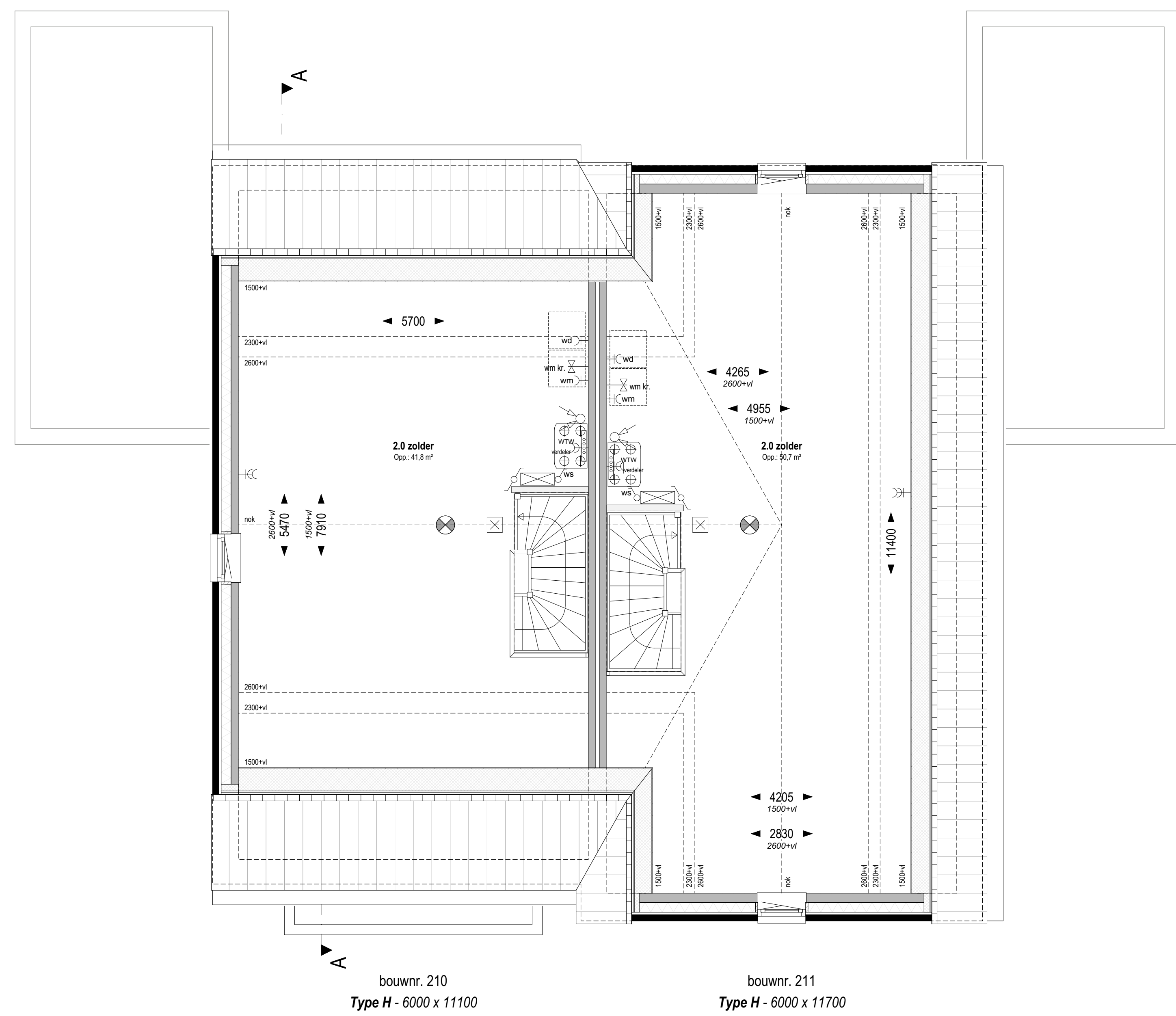
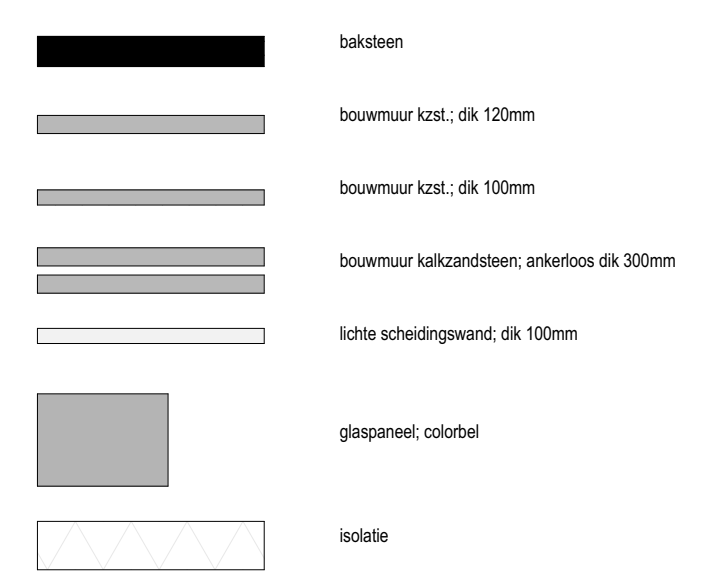
Renvoer electra, installaties



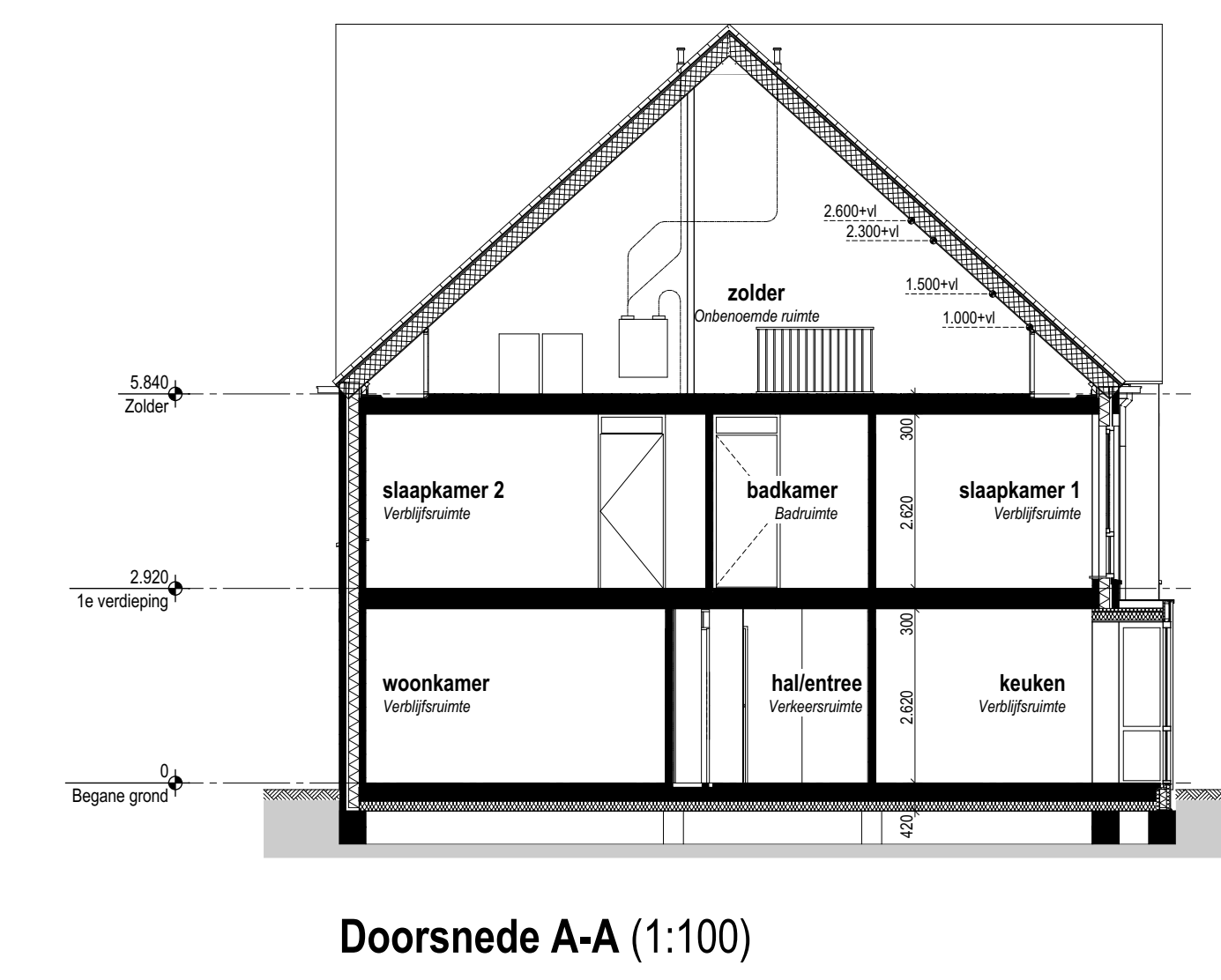
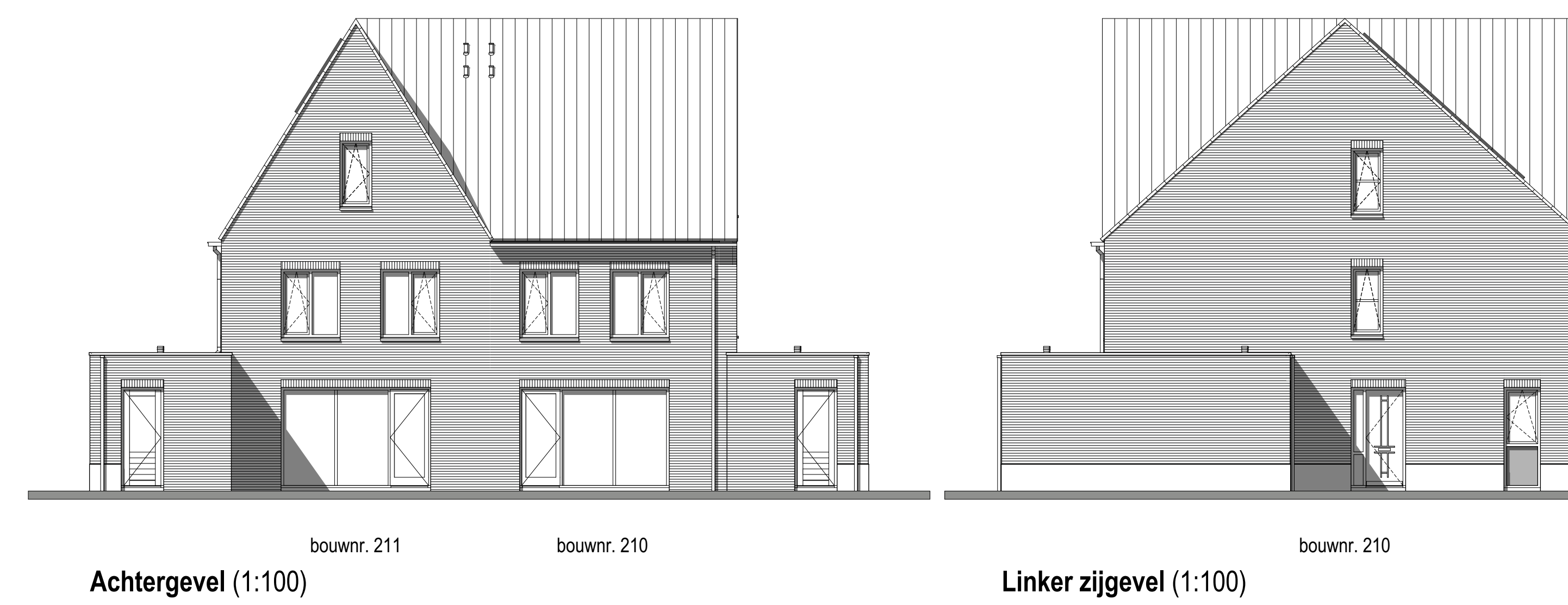
Renvoer algemeen



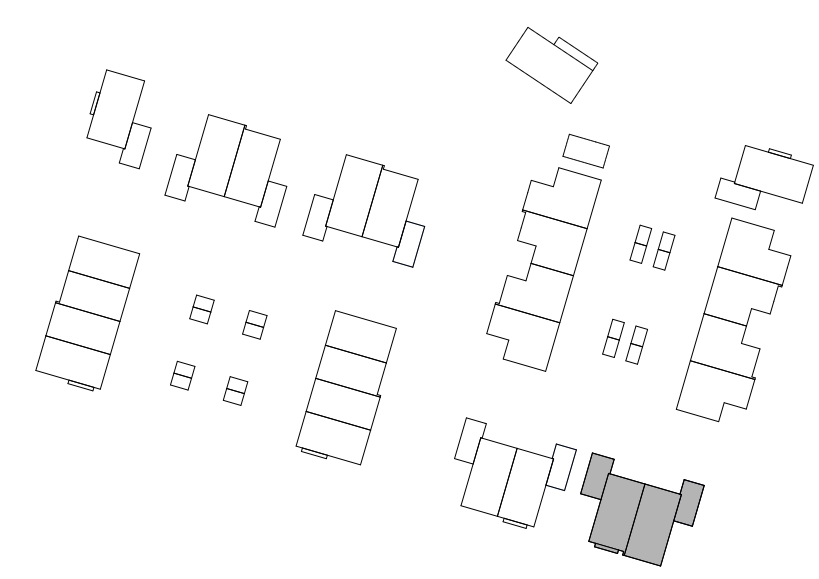
Renvoer materialen



Zolder +5840 (1:50)



Doorsnede A-A (1:100)



weusten liedenbaum architecten		Project "Hoog Dalem", deelplan D2, Populier - Gorinchem	Project nummer 19-2073
		Opdrachtgever V.O.F. Ooster-Linge 2	Status A3
		Definitief	Definitief
		Plattegronden gevels en drsn BLOK H - bwnr 210 en 211	Schaal 1:100, 1:50
		Daum 13-08-2021	Tekening nummer
Utrechtseweg 167 6812 AC Arnhem 026 443 6972 info@weustenliedenbaum.nl www.weustenliedenbaum.nl		Wijziging B Wijziging D Wijziging F	Wijziging C Wijziging E Wijziging G