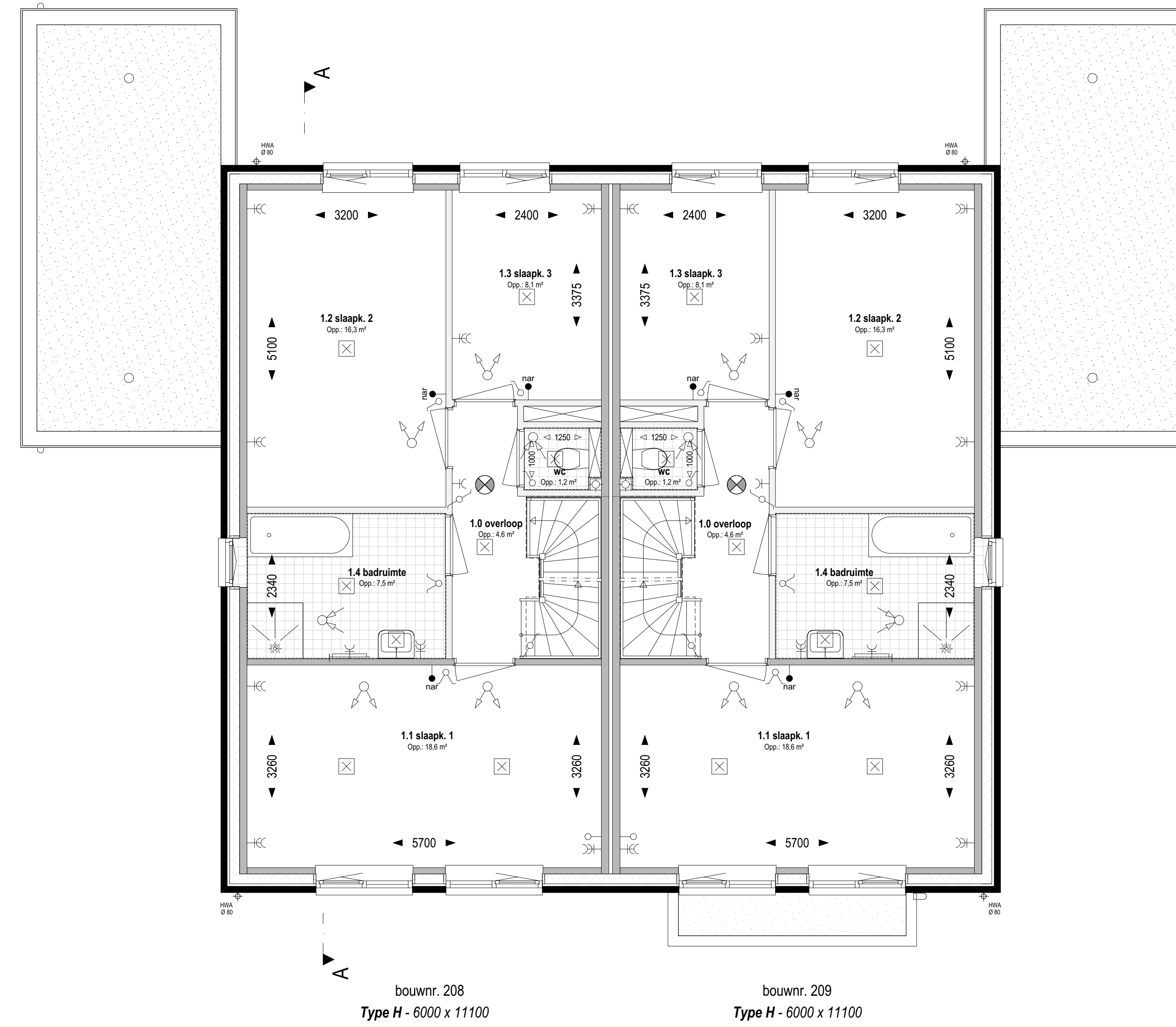
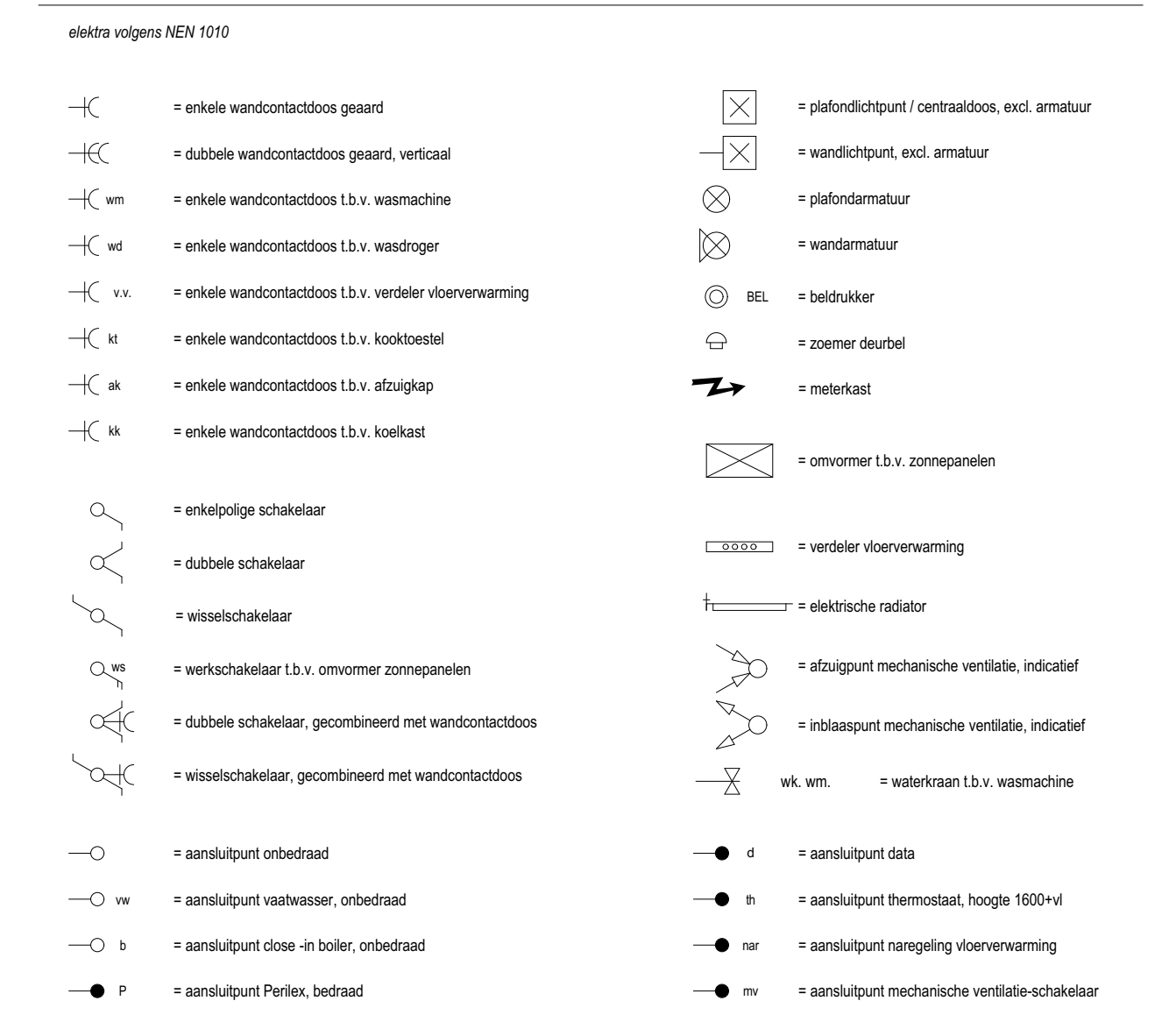


Begane grond Peil=0 (1:50)

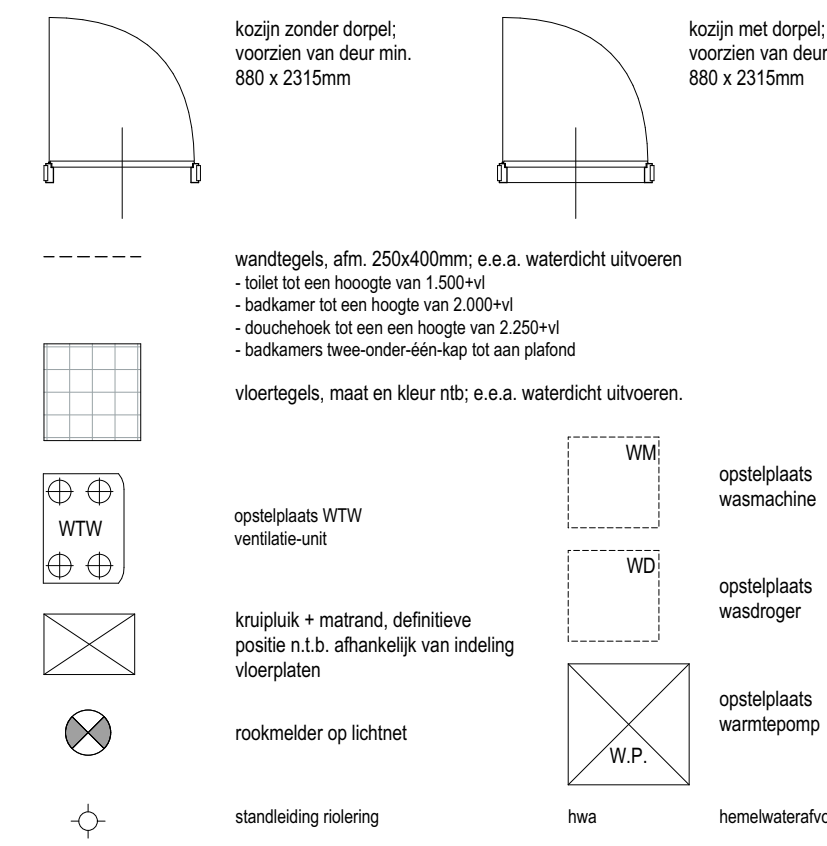


1e Verdieping +2920 (1:50)

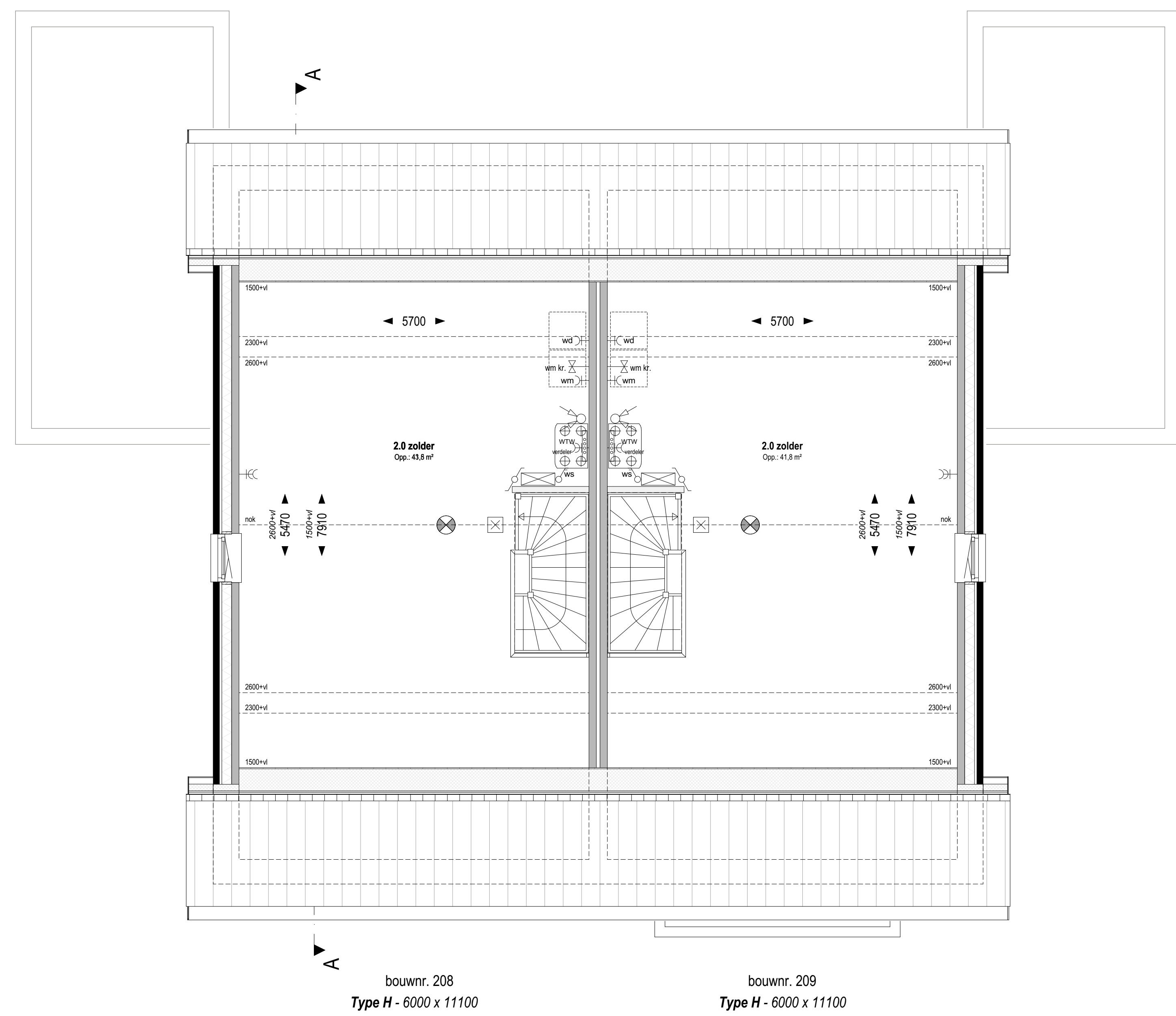
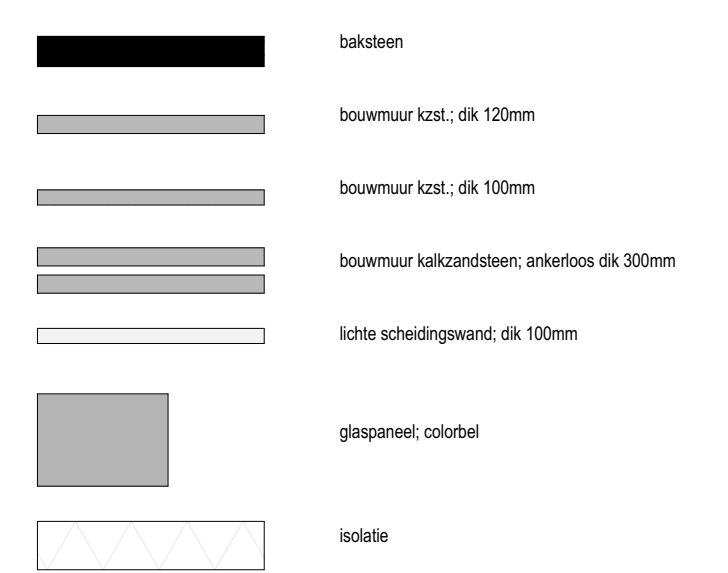
Renvooi electra, installaties



Renvooi algemeen



Renvooi materialen

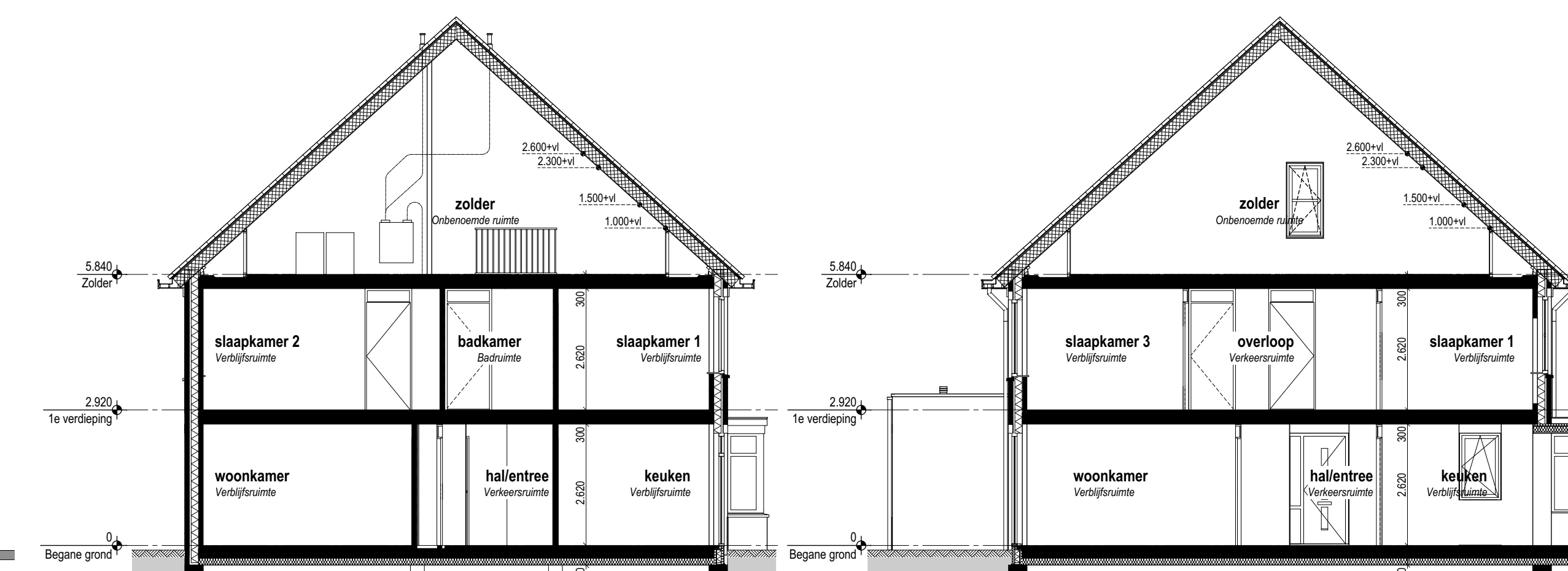


Zolder +5840 (1:50)



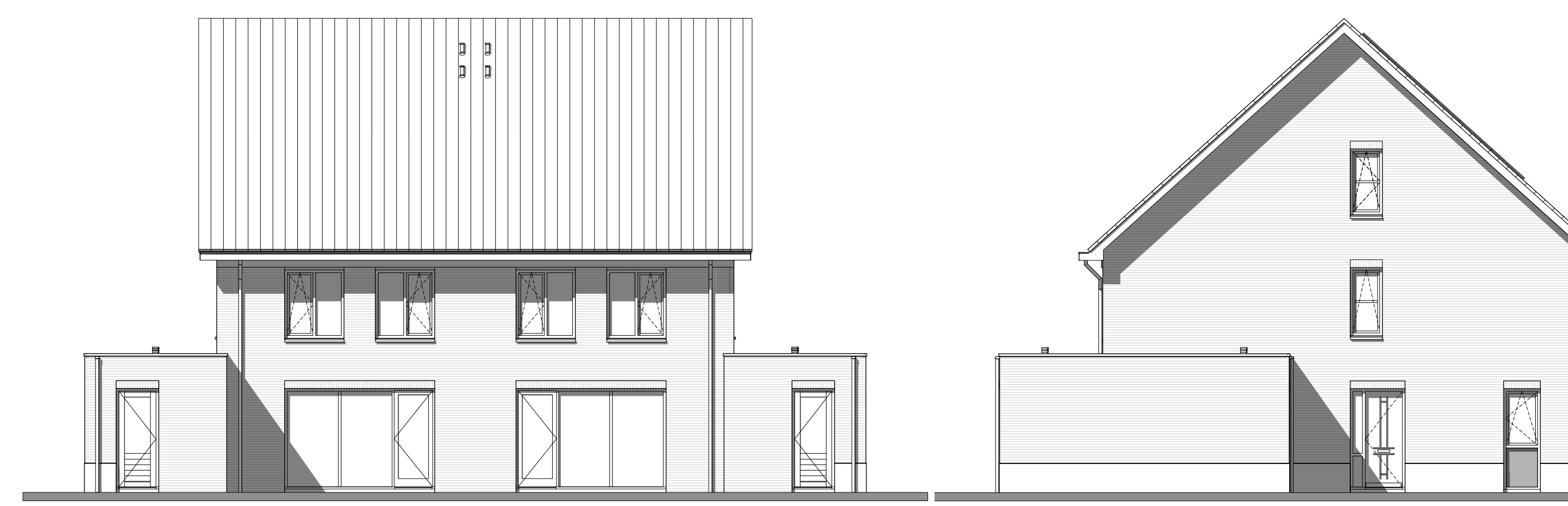
Voorgevel (1:100)

Rechter zijgevel (1:100)



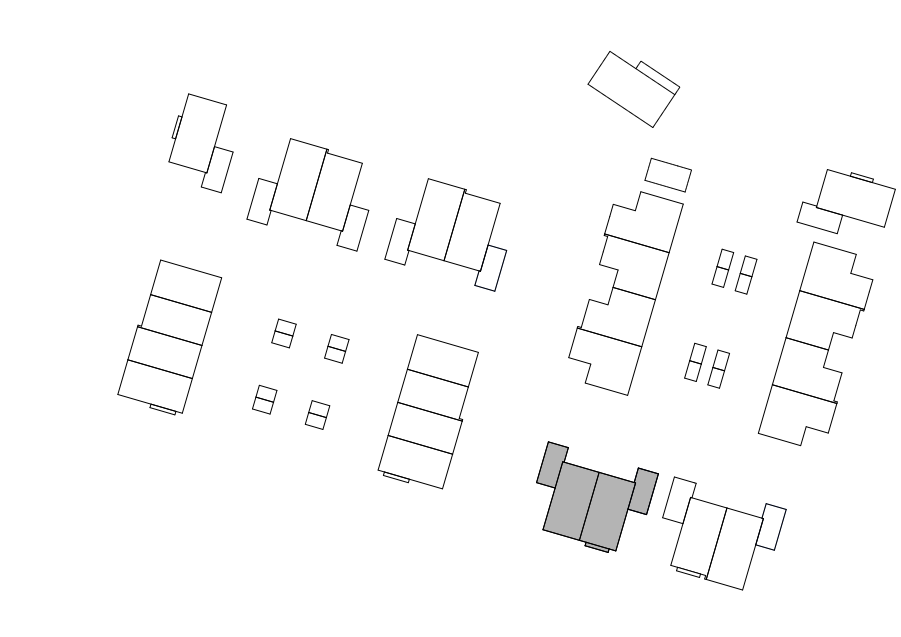
Doorsnede A-A (1:100)

Doorsnede B-B (1:100)



Achtergevel (1:100)

Linker zijgevel (1:100)



weusten liedenbaum architecten		Project "Hoog Dalem", deelplan D2, Populier - Gorinchem	Project nummer 19-2073
		Opdrachtgever V.O.F. Ooster-Linge 2	Status AG
		Onderdeel Plattegronden gevels en drsn BLOK H - bwnr 208 en 209	Definitief
		Daum Wijziging A	Schaal 1:100, 1:50
		Wijziging B	Gekeurd
		Wijziging C	Tekening nummer
		Wijziging D	
		Wijziging E	
		Wijziging F	
		Wijziging G	