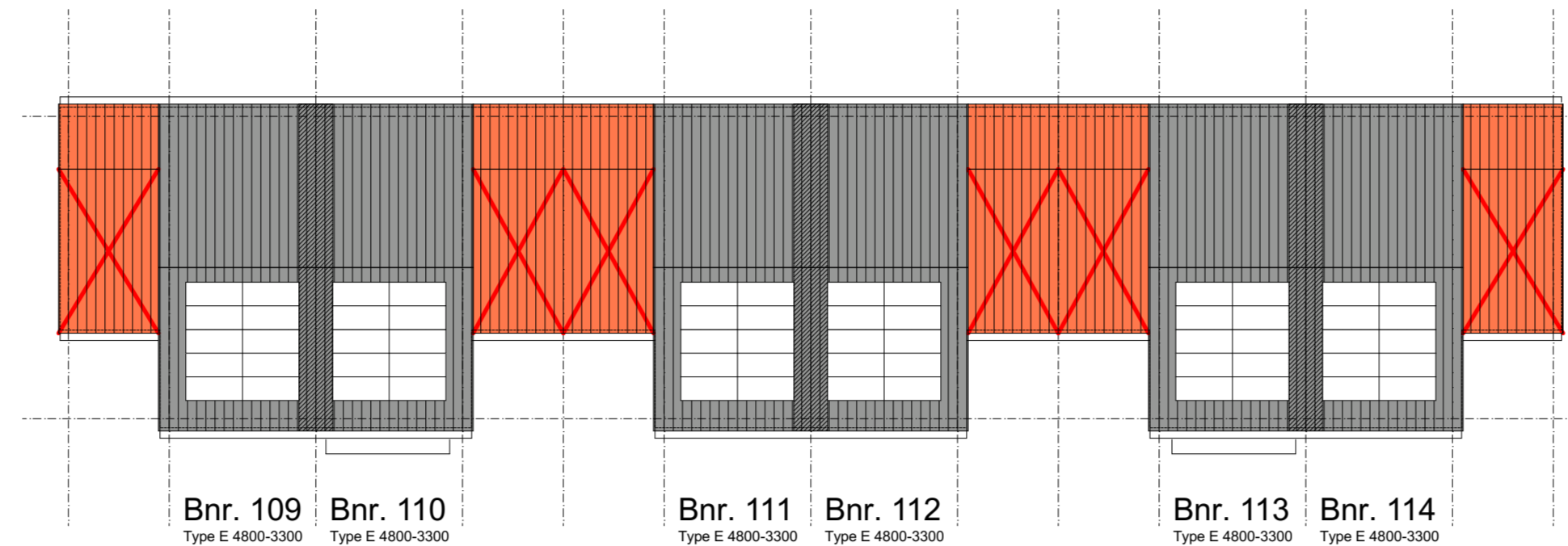
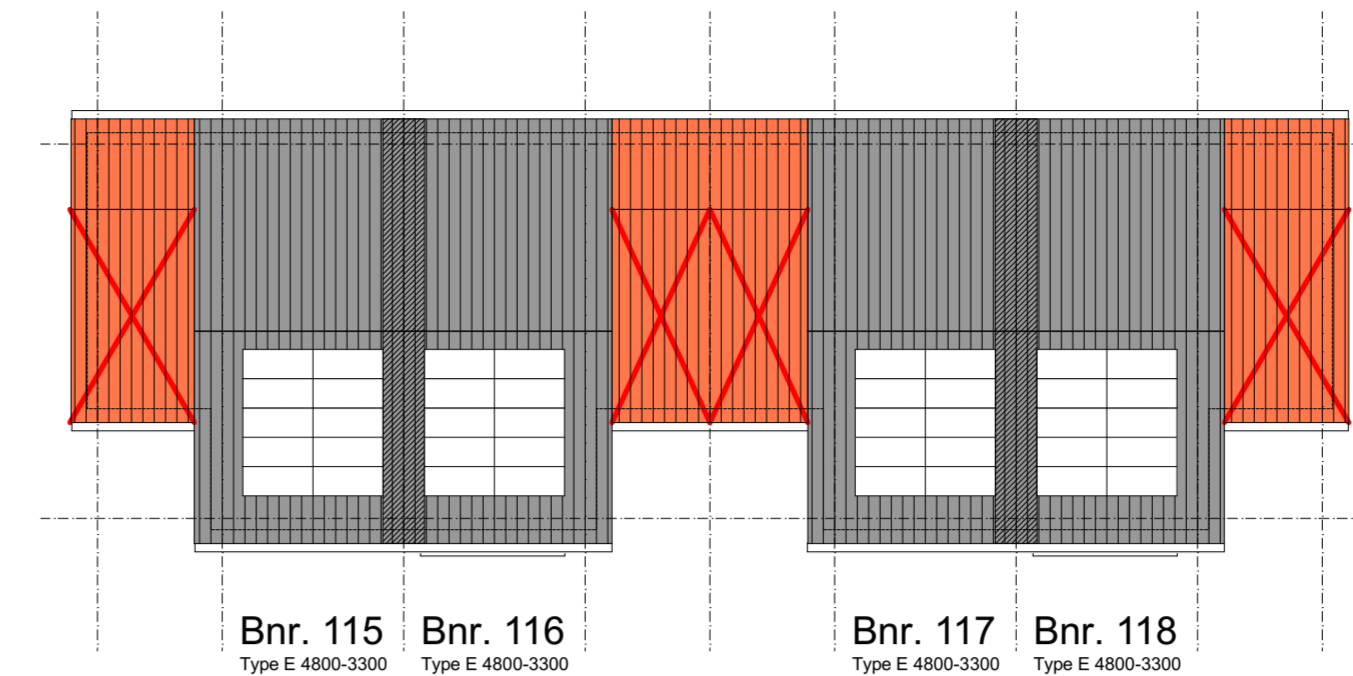


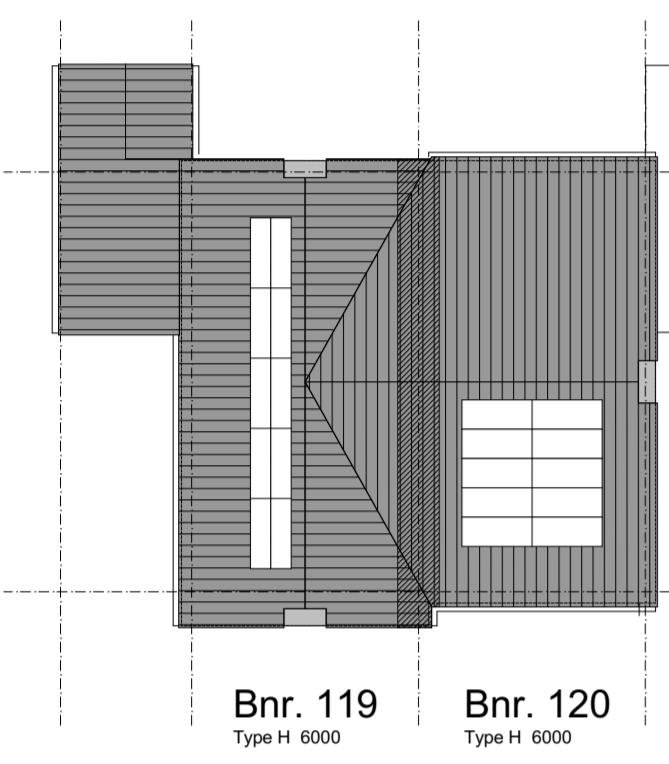
blok A
Bnr. 100 Type C 5400 Bnr. 101 Type C 5400 Bnr. 102 Type C 5400 Bnr. 103 Type C 5400 Bnr. 104 Type C 5400 Bnr. 105 Type C 5400 Bnr. 106 Type C 5400 Bnr. 107 Type C 5400 Bnr. 108 Type C 5400



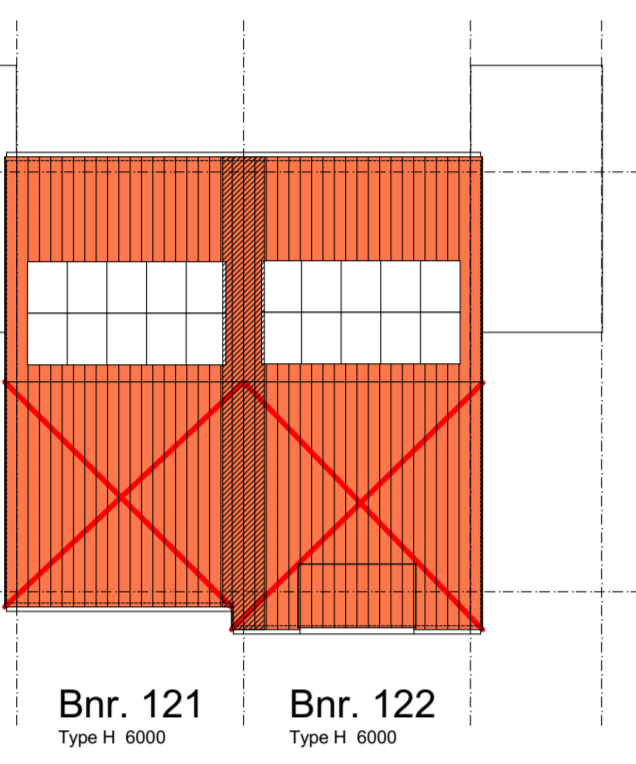
blok B
Bnr. 109 Type E 4800-3300 Bnr. 110 Type E 4800-3300 Bnr. 111 Type E 4800-3300 Bnr. 112 Type E 4800-3300 Bnr. 113 Type E 4800-3300 Bnr. 114 Type E 4800-3300



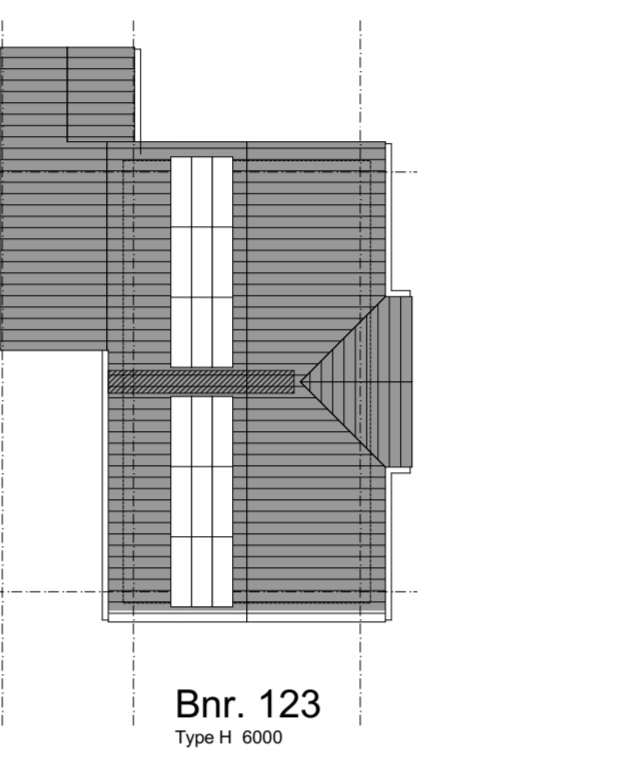
blok C
Bnr. 115 Type D 5700 Bnr. 116 Type E 4800-3300 Bnr. 117 Type E 4800-3300 Bnr. 118 Type E 4800-3300



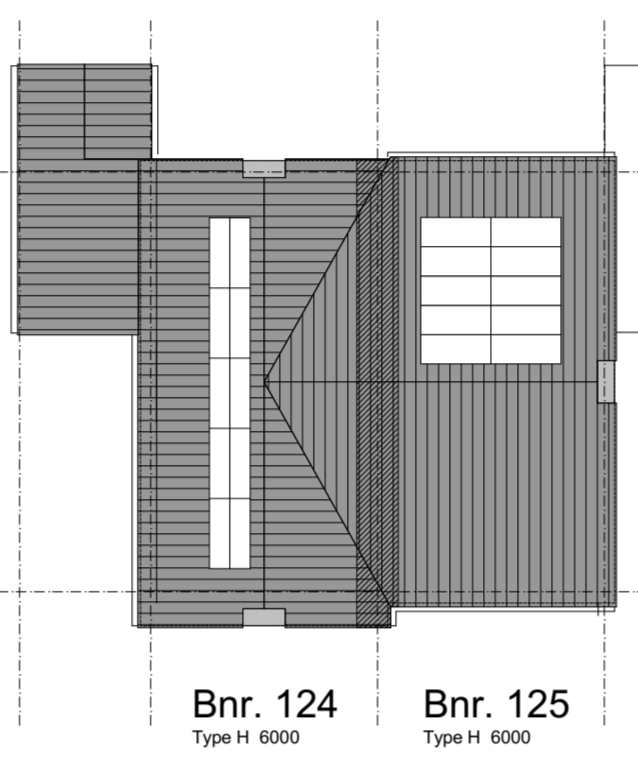
blok D
Bnr. 119 Type H 6000 Bnr. 120 Type H 6000



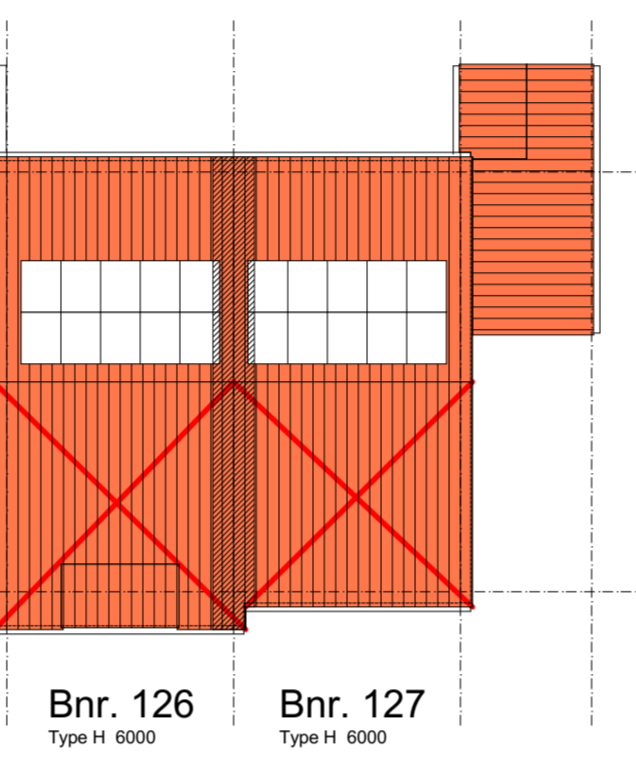
blok D
Bnr. 121 Type H 6000 Bnr. 122 Type H 6000



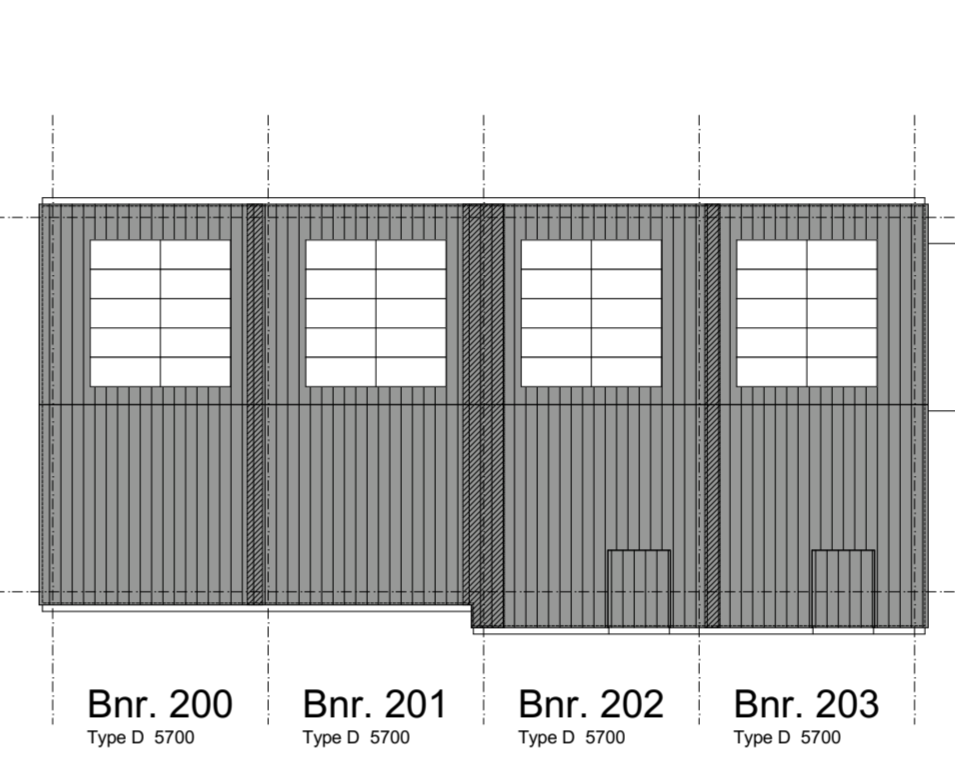
blok D
Bnr. 123 Type H 6000



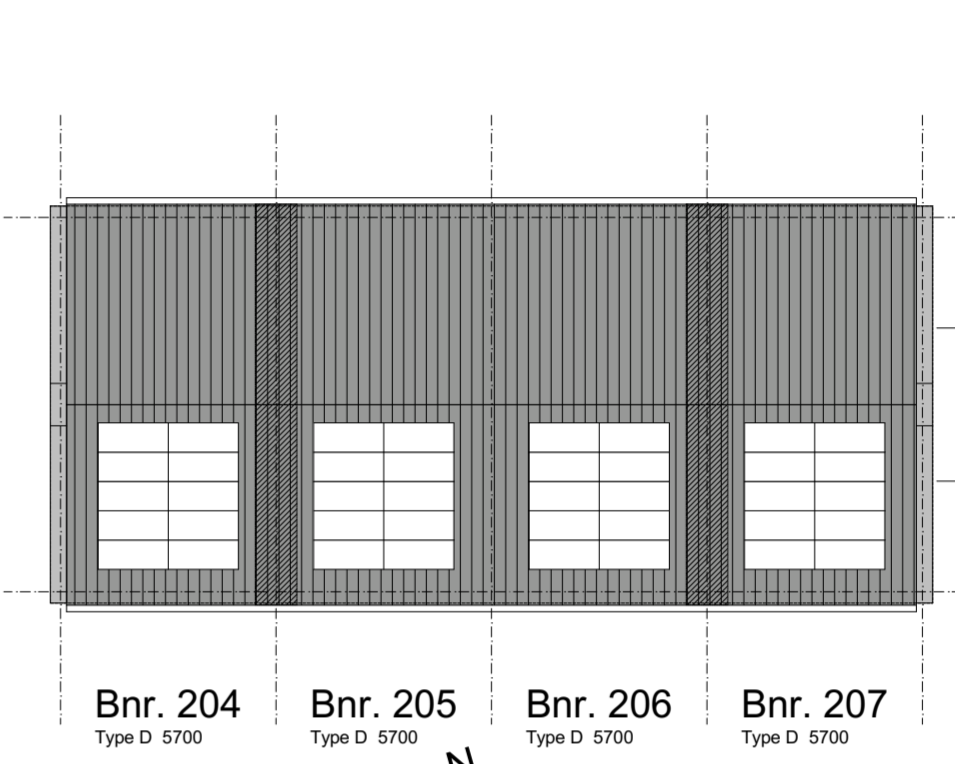
blok E
Bnr. 124 Type H 6000 Bnr. 125 Type H 6000



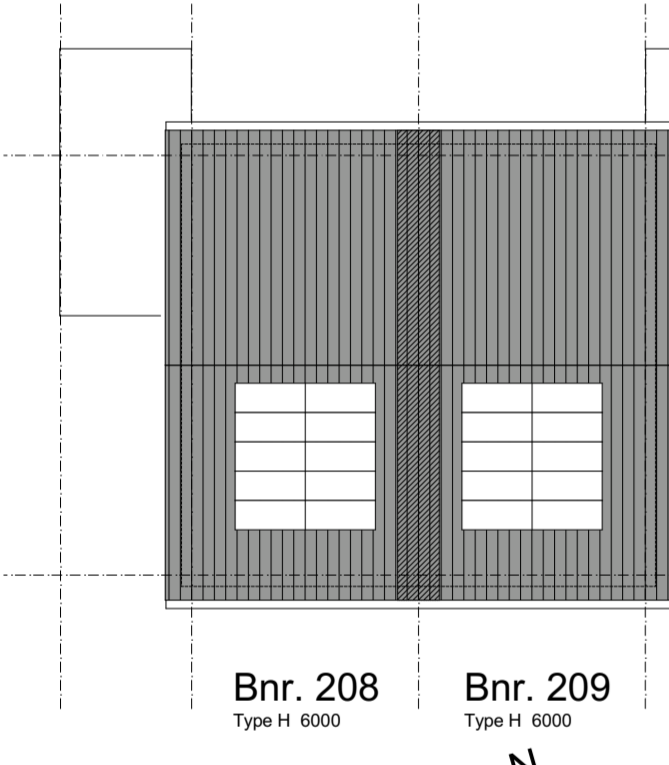
blok E
Bnr. 126 Type H 6000 Bnr. 127 Type H 6000



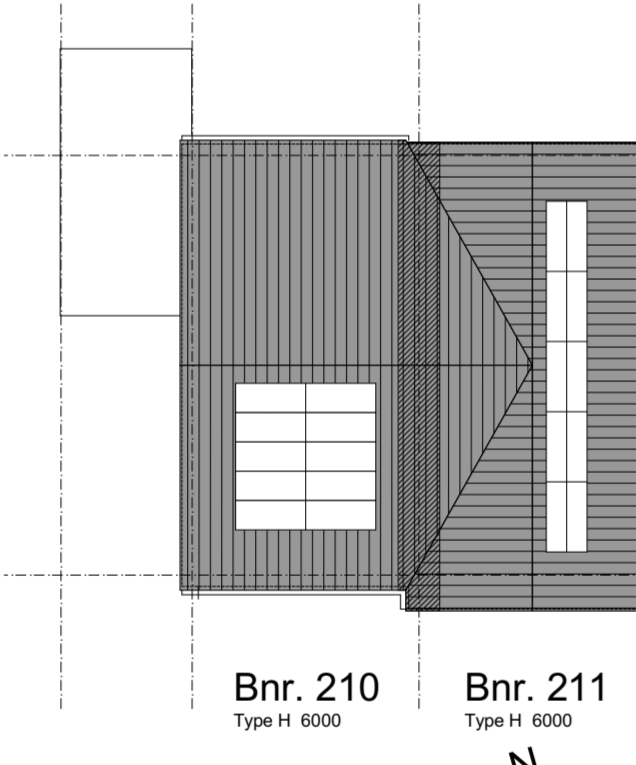
blok F
Bnr. 200 Type D 5700 Bnr. 201 Type D 5700 Bnr. 202 Type D 5700 Bnr. 203 Type D 5700



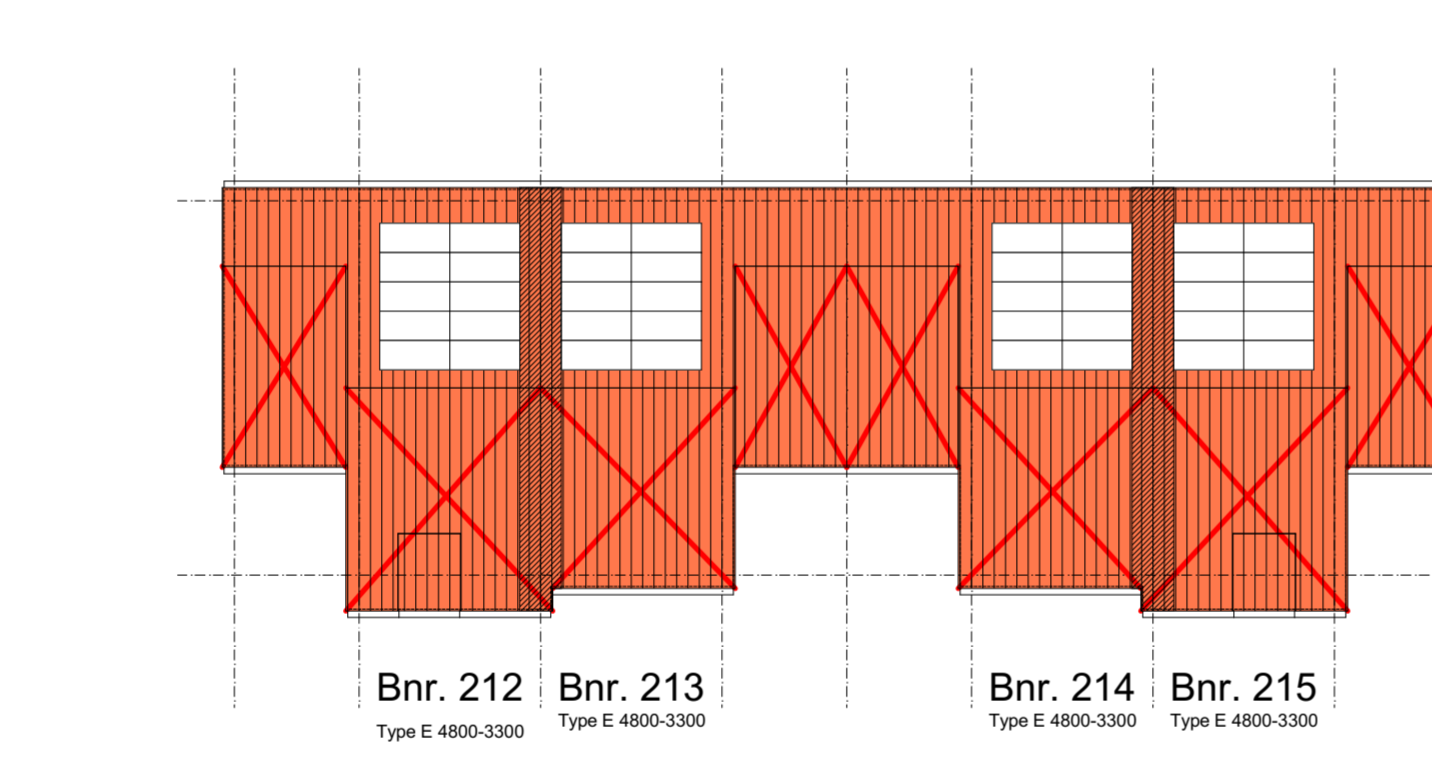
blok G
Bnr. 204 Type D 5700 Bnr. 205 Type D 5700 Bnr. 206 Type D 5700 Bnr. 207 Type D 5700



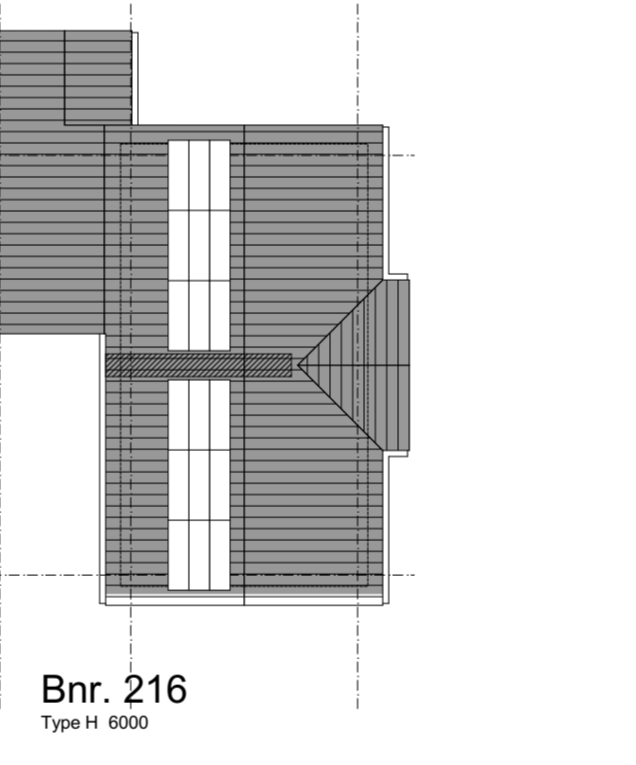
blok H
Bnr. 208 Type H 6000 Bnr. 209 Type H 6000



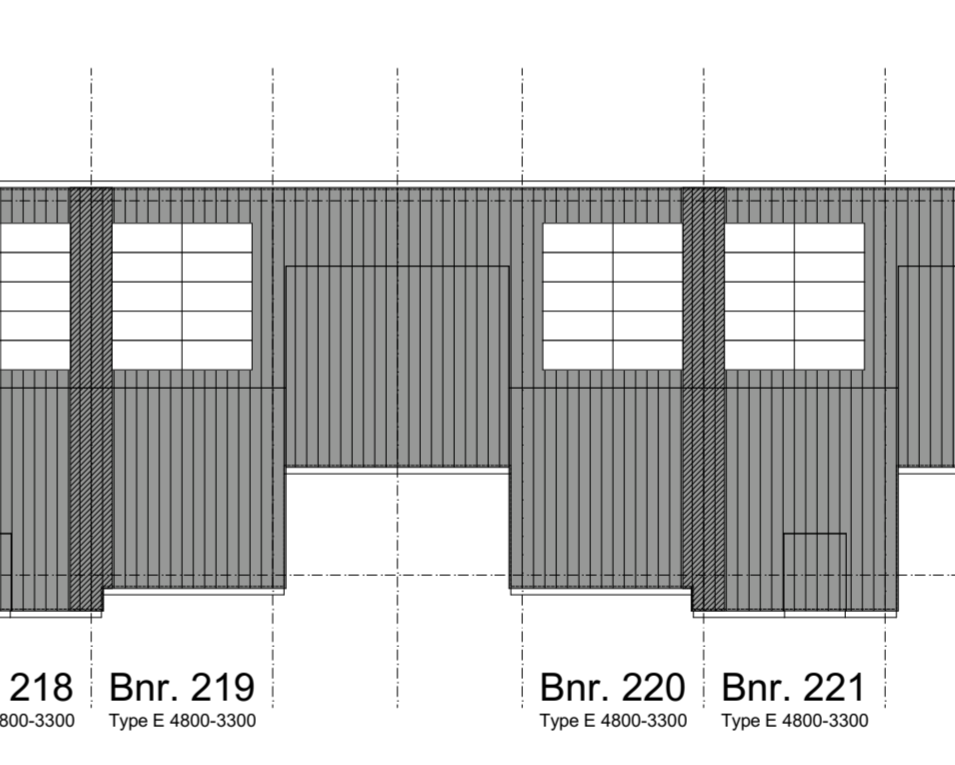
blok H
Bnr. 210 Type H 6000 Bnr. 211 Type H 6000



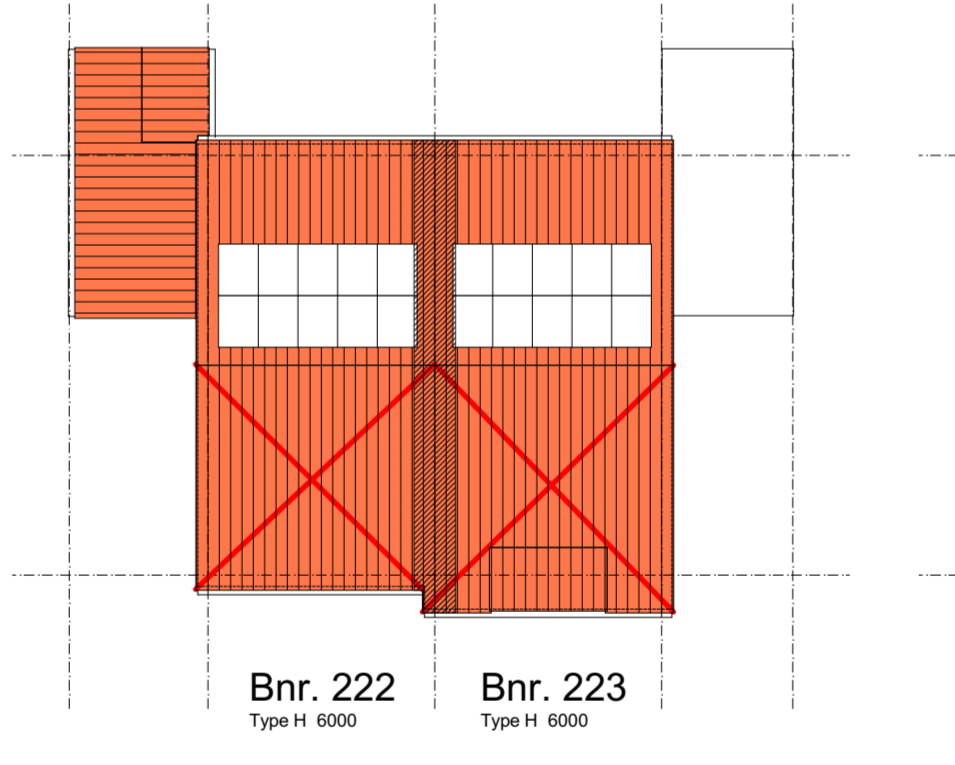
blok I
Bnr. 212 Type E 4800-3300 Bnr. 213 Type E 4800-3300 Bnr. 214 Type E 4800-3300 Bnr. 215 Type E 4800-3300



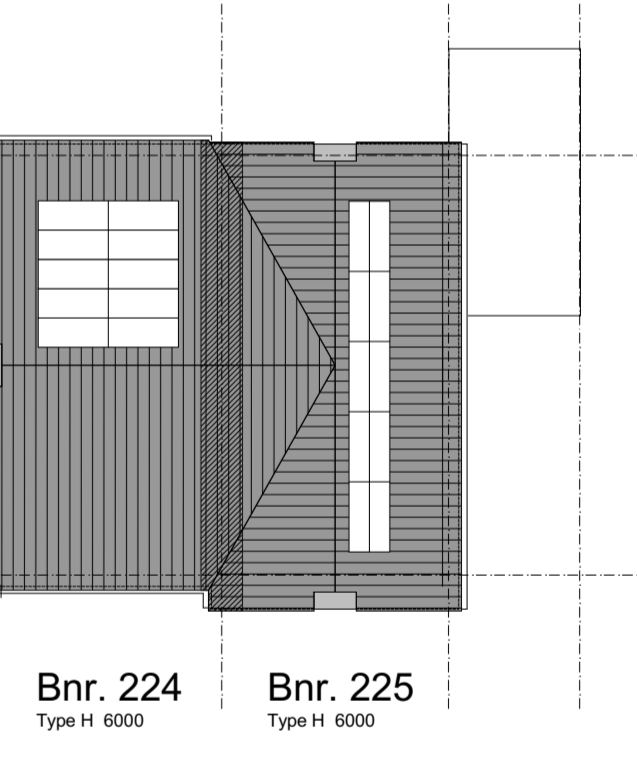
blok I
Bnr. 216 Type H 6000



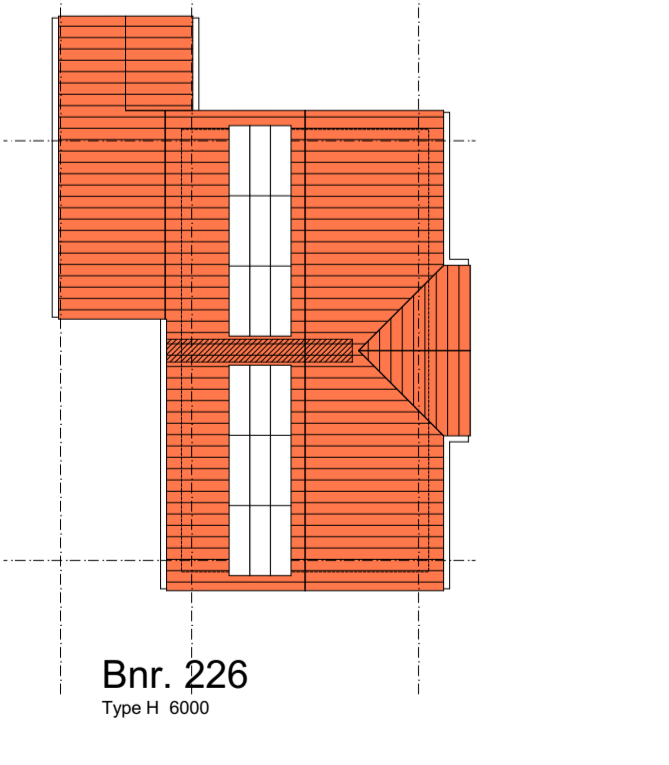
blok J
Bnr. 218 Type E 4800-3300 Bnr. 219 Type E 4800-3300 Bnr. 220 Type E 4800-3300 Bnr. 221 Type E 4800-3300



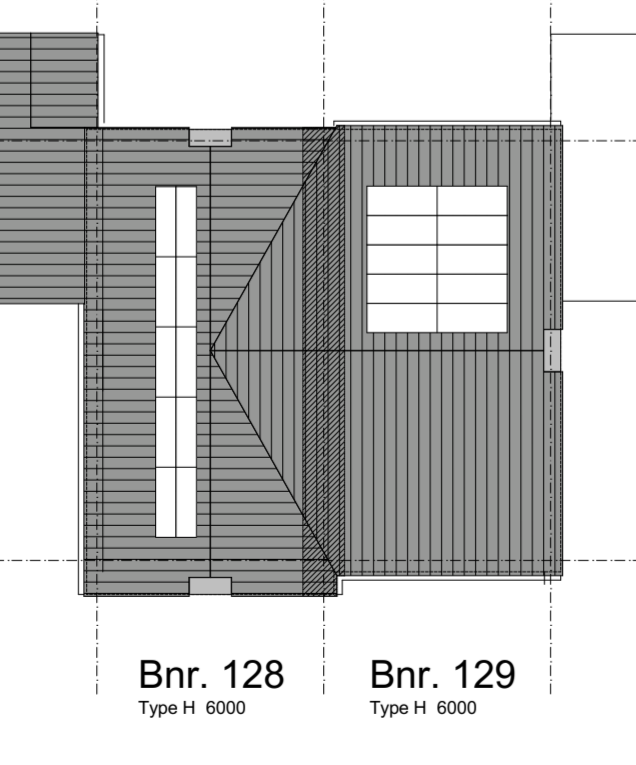
blok K
Bnr. 222 Type H 6000 Bnr. 223 Type H 6000



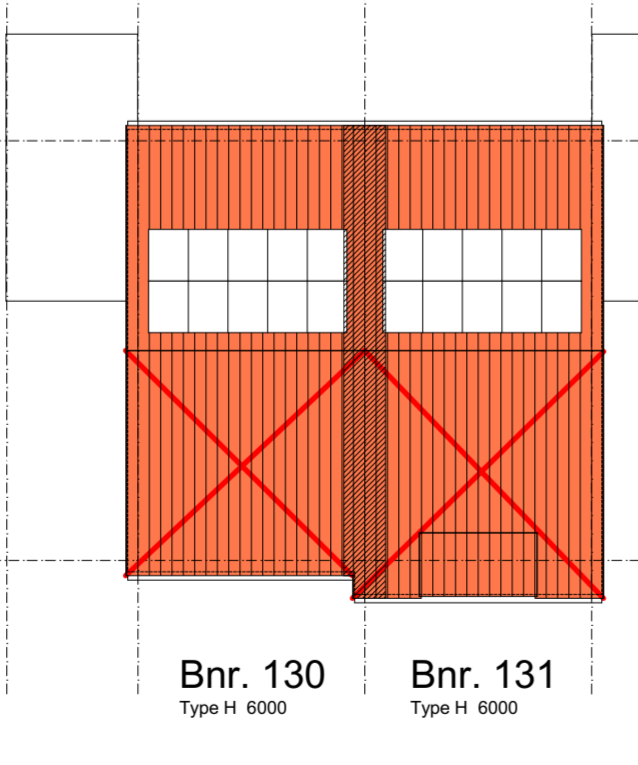
blok K
Bnr. 224 Type H 6000 Bnr. 225 Type H 6000



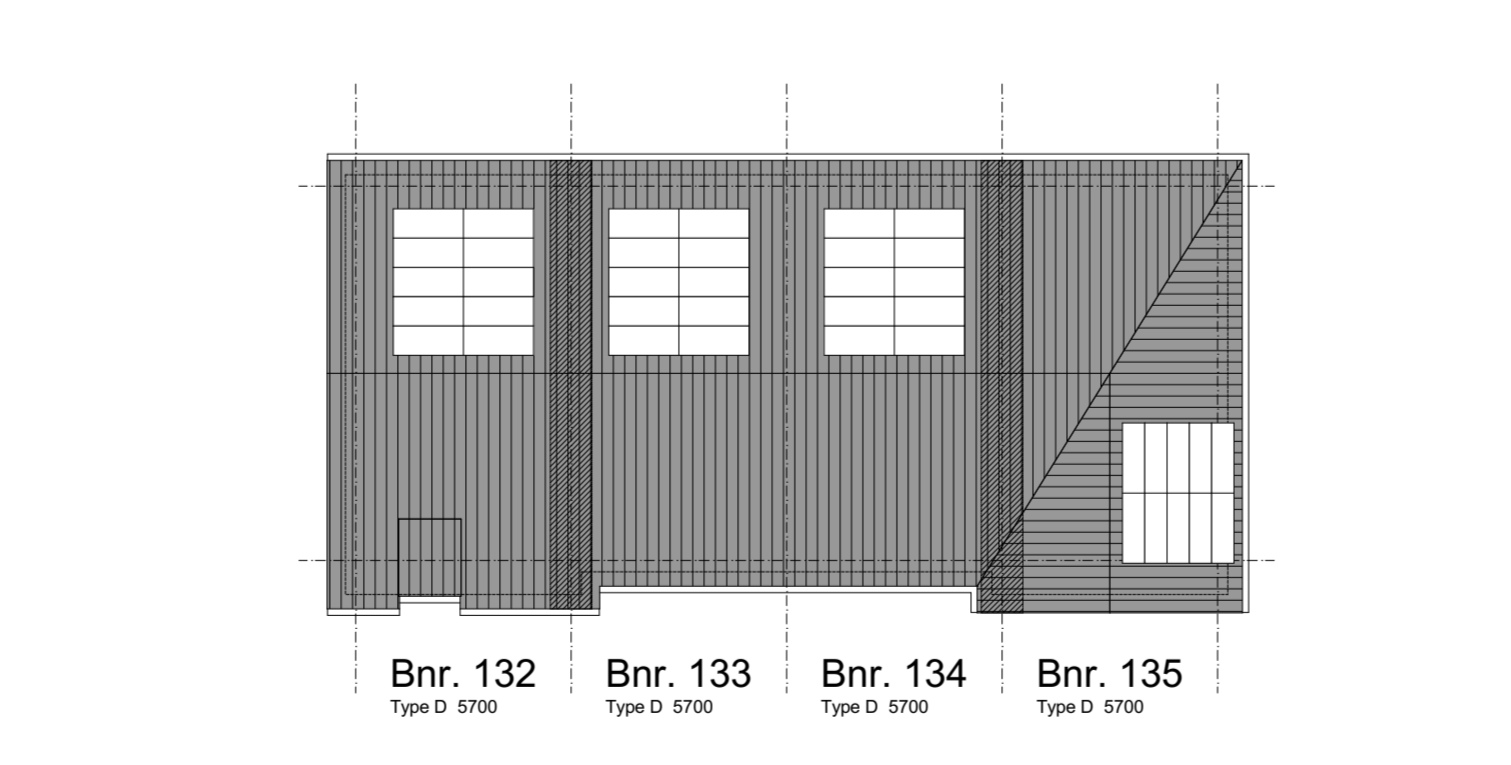
blok K
Bnr. 226 Type H 6000



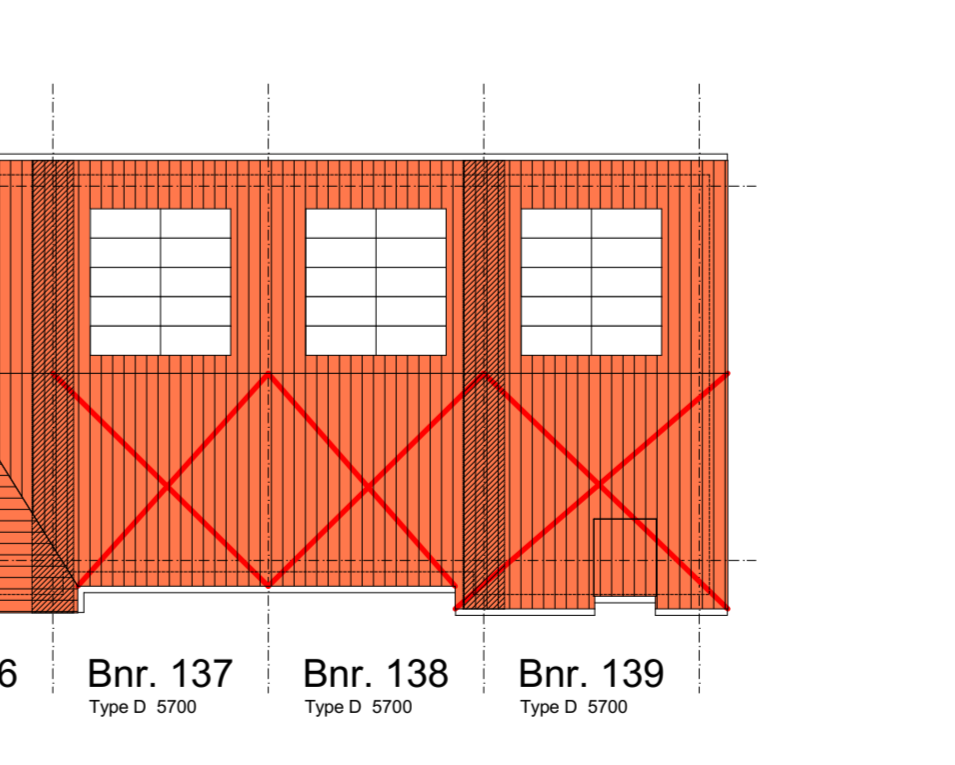
blok L
Bnr. 128 Type H 6000 Bnr. 129 Type H 6000



blok L
Bnr. 130 Type H 6000 Bnr. 131 Type H 6000



blok M
Bnr. 132 Type D 5700 Bnr. 133 Type D 5700 Bnr. 134 Type D 5700 Bnr. 135 Type D 5700



blok N
Bnr. 136 Type D 5700 Bnr. 137 Type D 5700 Bnr. 138 Type D 5700 Bnr. 139 Type D 5700

vrij te houden zone t.b.v. installaties

RUIMTE ZONNEPANELEN (1:200)

weusten liedenbaum architecten	Project "Hoog Dalem" Middengebied - Gorinchem	Project nummer 19-2073
	Opdrachtgever V.O.F. Ooster-Linge 2	Status A1+ Definitief
Utrechtseweg 167 6812 AC Amheim 026 443 6972 info@weustenliedenbaum.nl www.weustenliedenbaum.nl	Datum 02-02-2021	Schaal 1:200
	Schematisch overzicht zonnepanelen Basis	
Wijziging A	22-01-2021	Getekend
Wijziging B		Tekening nummer
Wijziging C		DO - 070
Wijziging D		
Wijziging E		
Wijziging F		
Wijziging G		