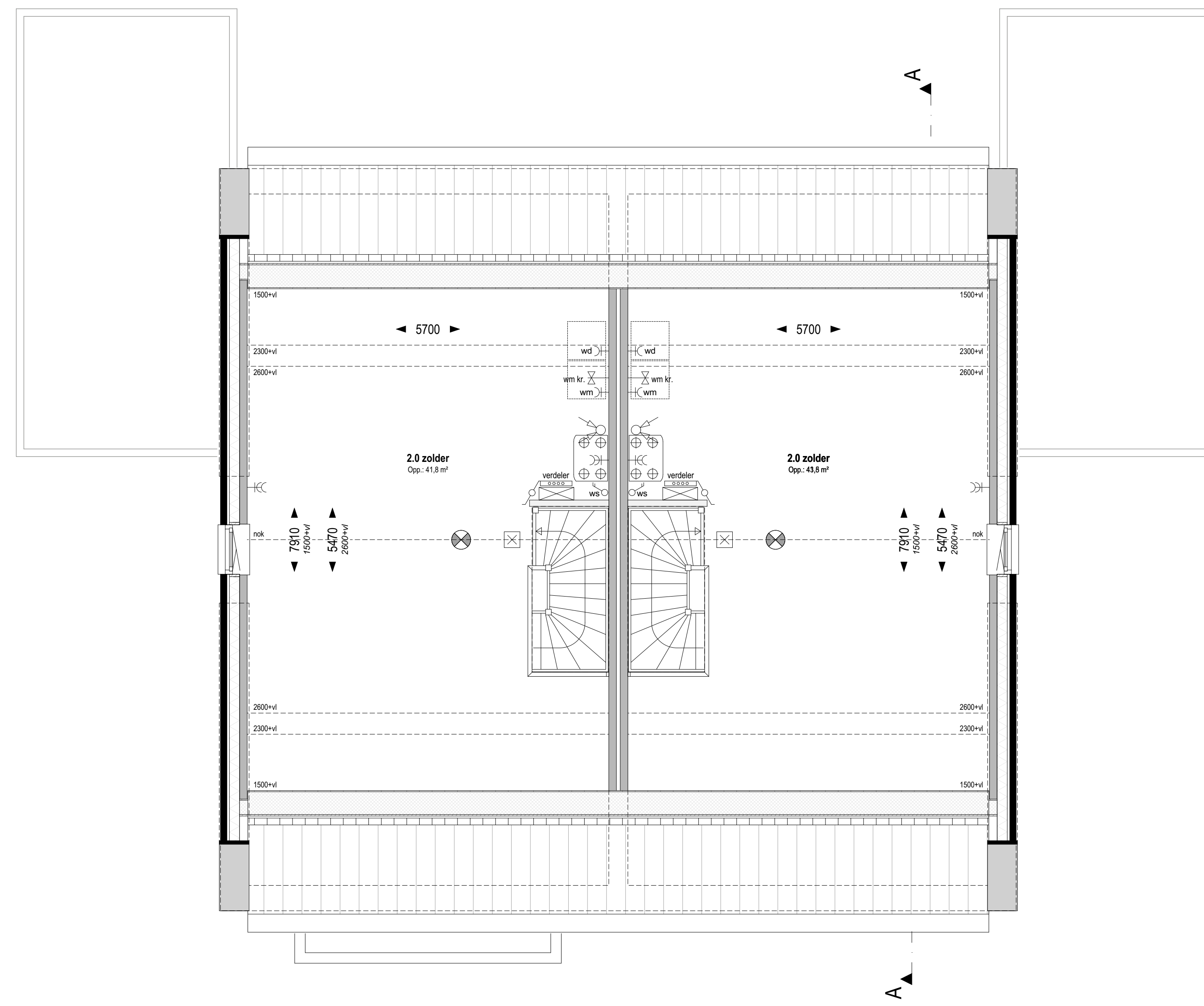
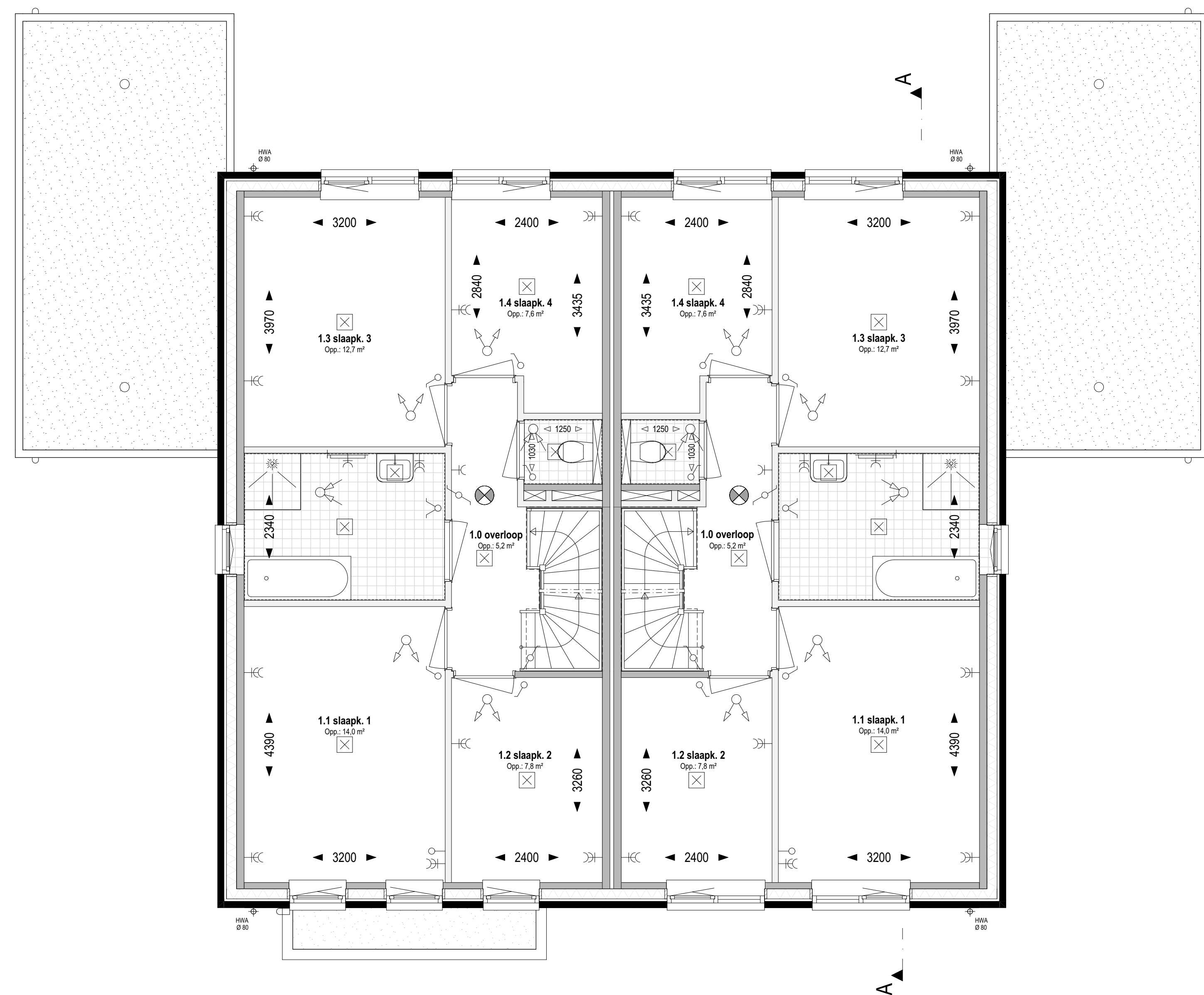


Begane grond Peil=0 (1:50)

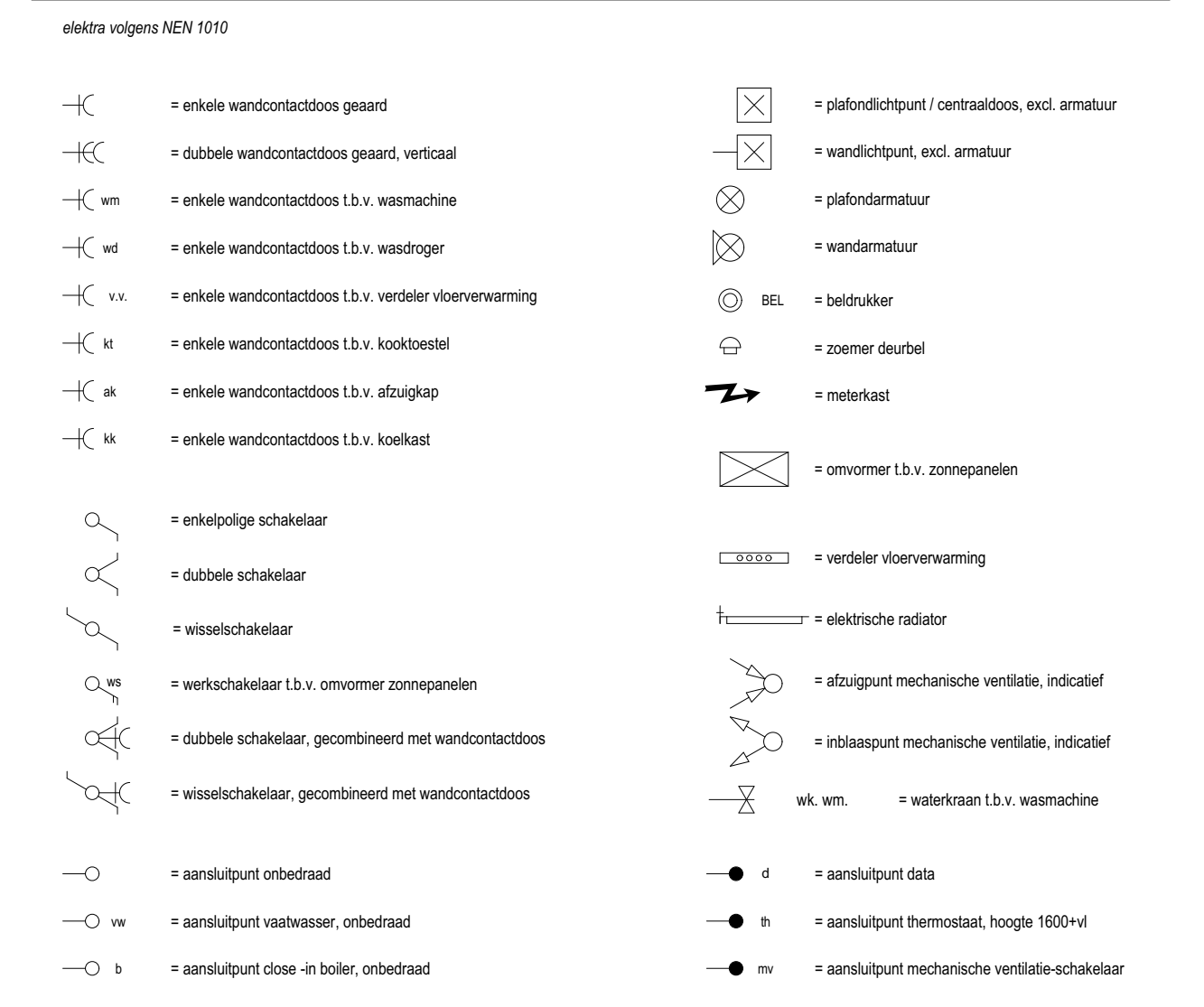


Zolder +5840 (1:50)

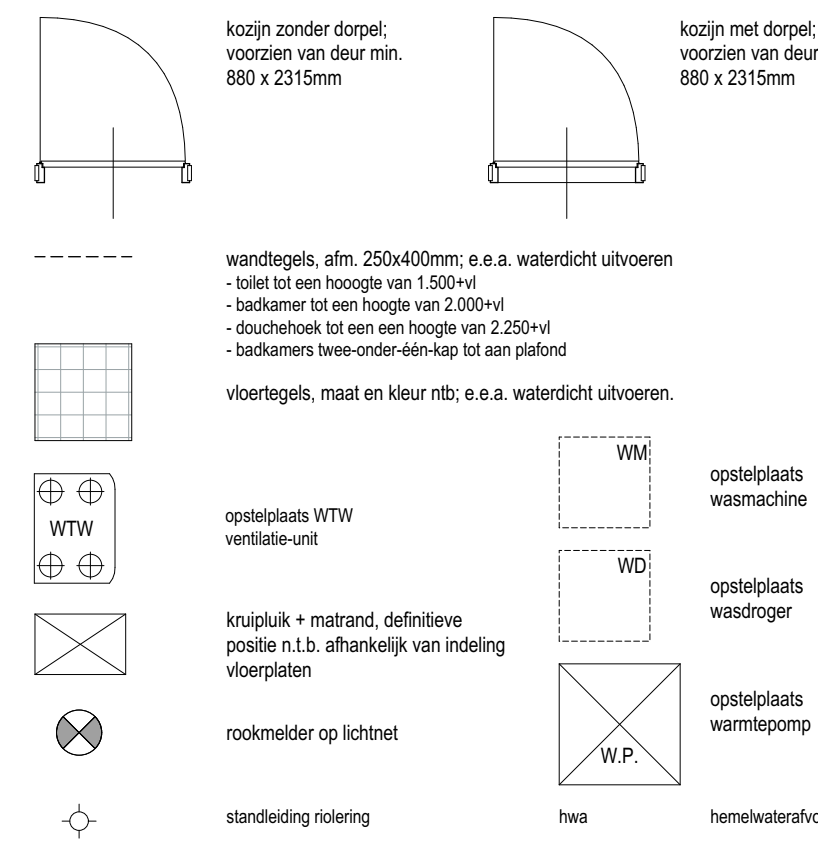


1e Verdieping +2920 (1:50)

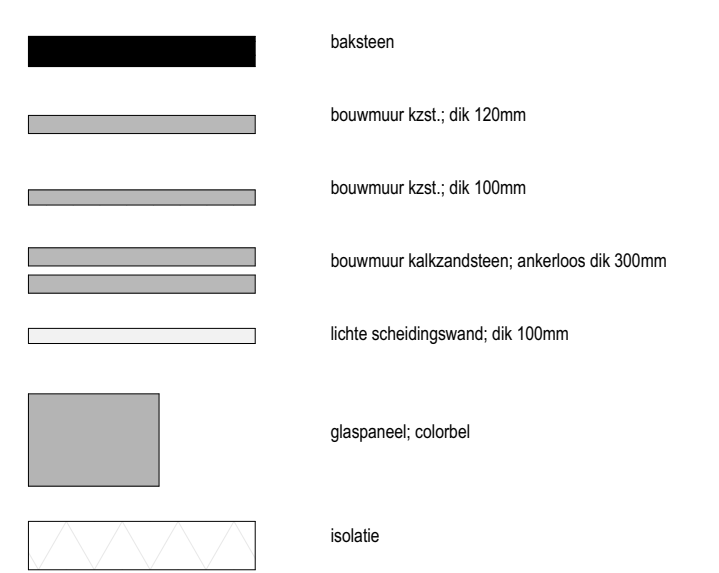
Renvoer electra, installaties



Renvoer algemeen

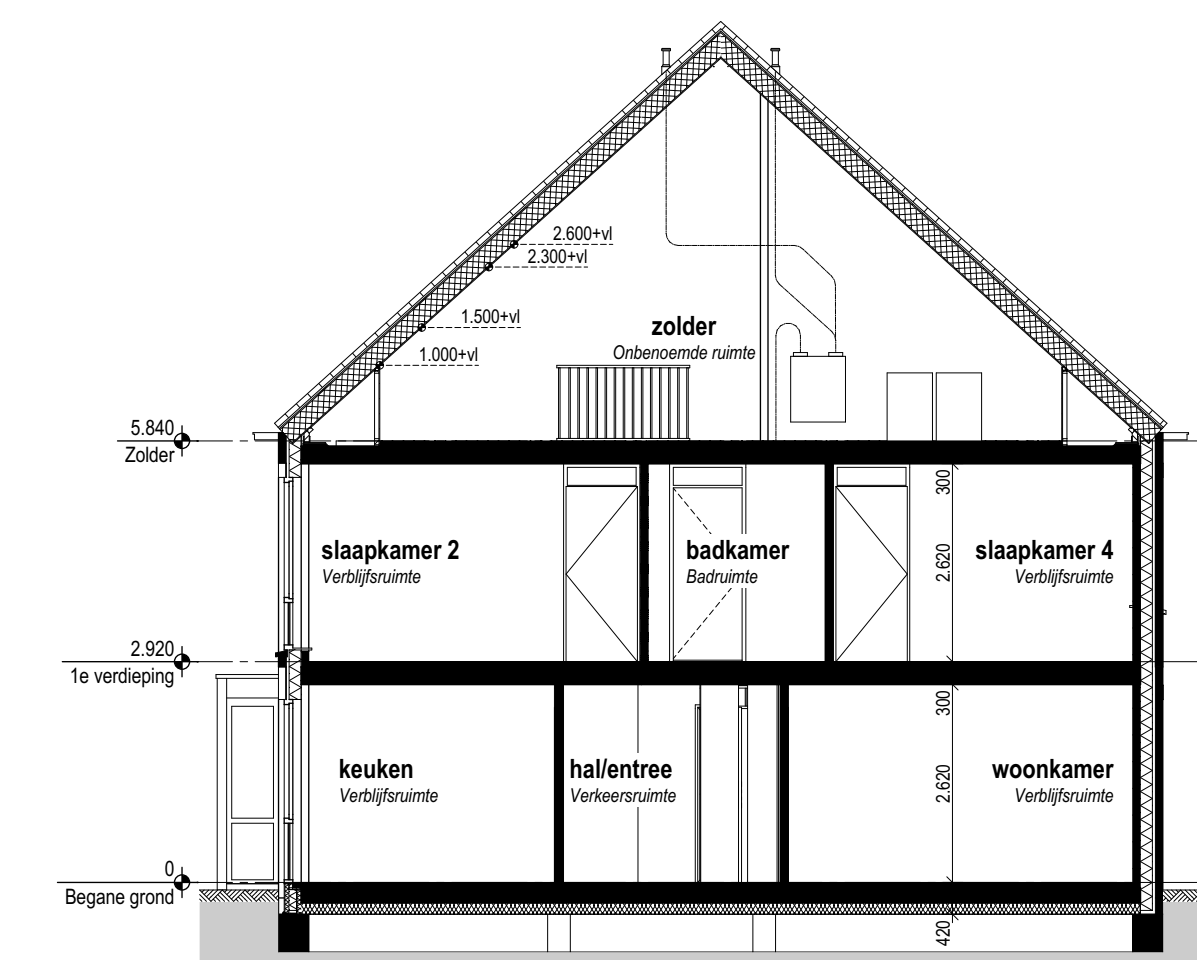


Renvoer materialen

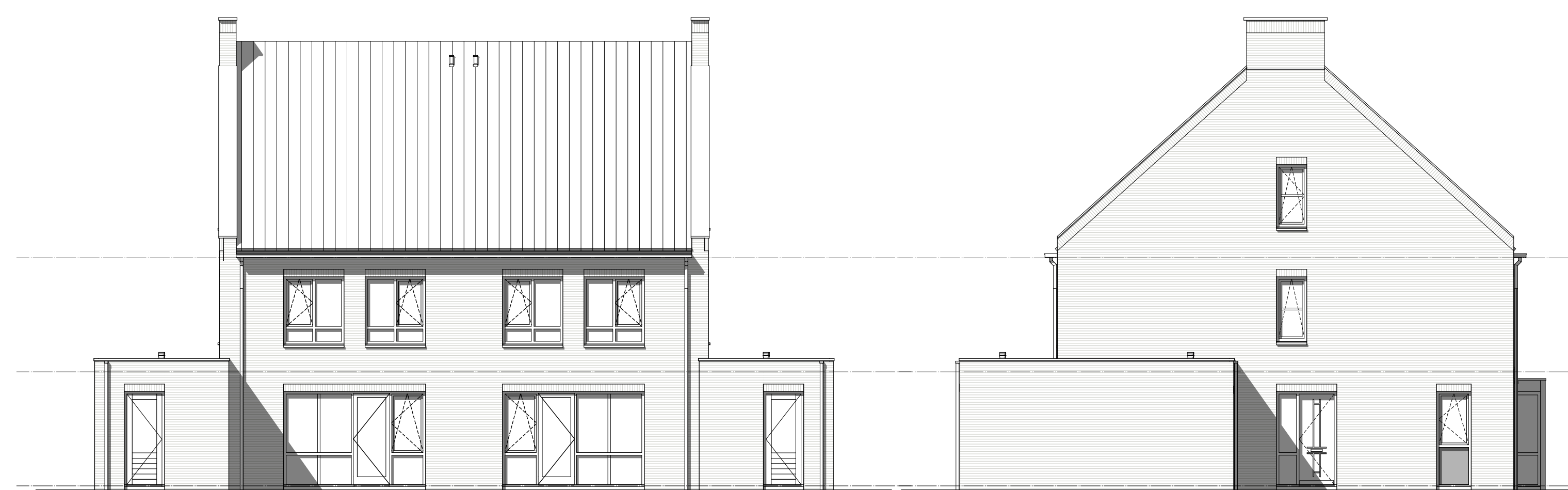


Voorgevel (1:100)

Rechter zijgevel (1:100)

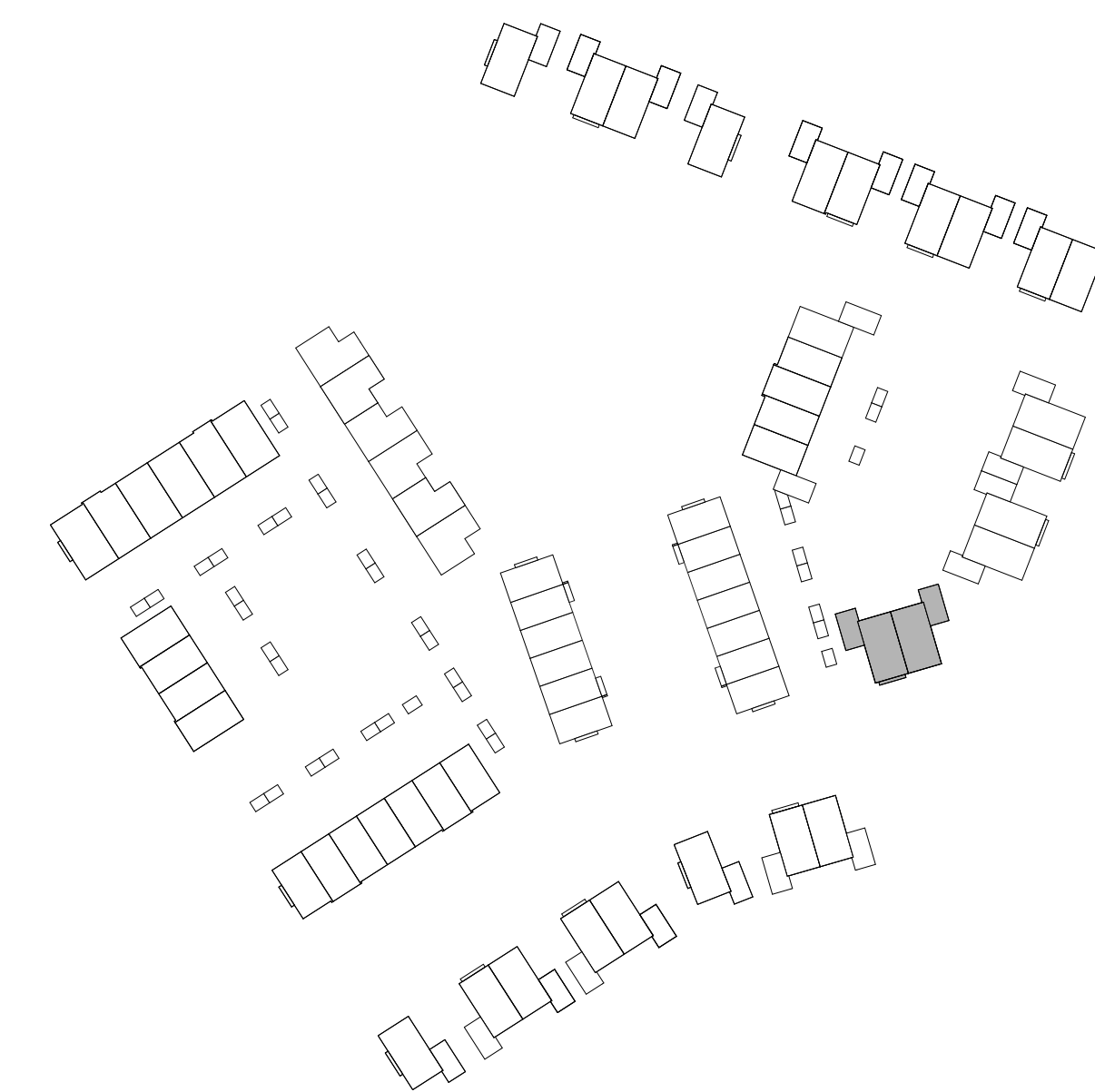


Doorsnede A-A (1:100)



Achtergevel (1:100)

Linker zijgevel (1:100)



weusten liedenbaum architecten	Project "Hoog Dalem" Deelgebied B6 - Gorinchem	Project nummer 18-2030	
	Opdrachtgever V.O.F. Ooster-Linge 2	Status	
	Onderdeel Plattegronden gevels en drsn BLOK B - bwnr 308 en 309	AQ	
	Daum Wijkpiling A	Schaal	
	02-12-2010	24-09-2020	
Utrechtseweg 167 6812 AC Arnhem 026 443 6972 info@weustenliedenbaum.nl www.weustenliedenbaum.nl	Wijkpiling B	Wijkpiling C	Gekeurd 1:50, 1:100
	Wijkpiling D	Wijkpiling E	Tekening nummer
	Wijkpiling F	Wijkpiling G	VK - 105